



## New Crescent Yard, NW10

### £450,000

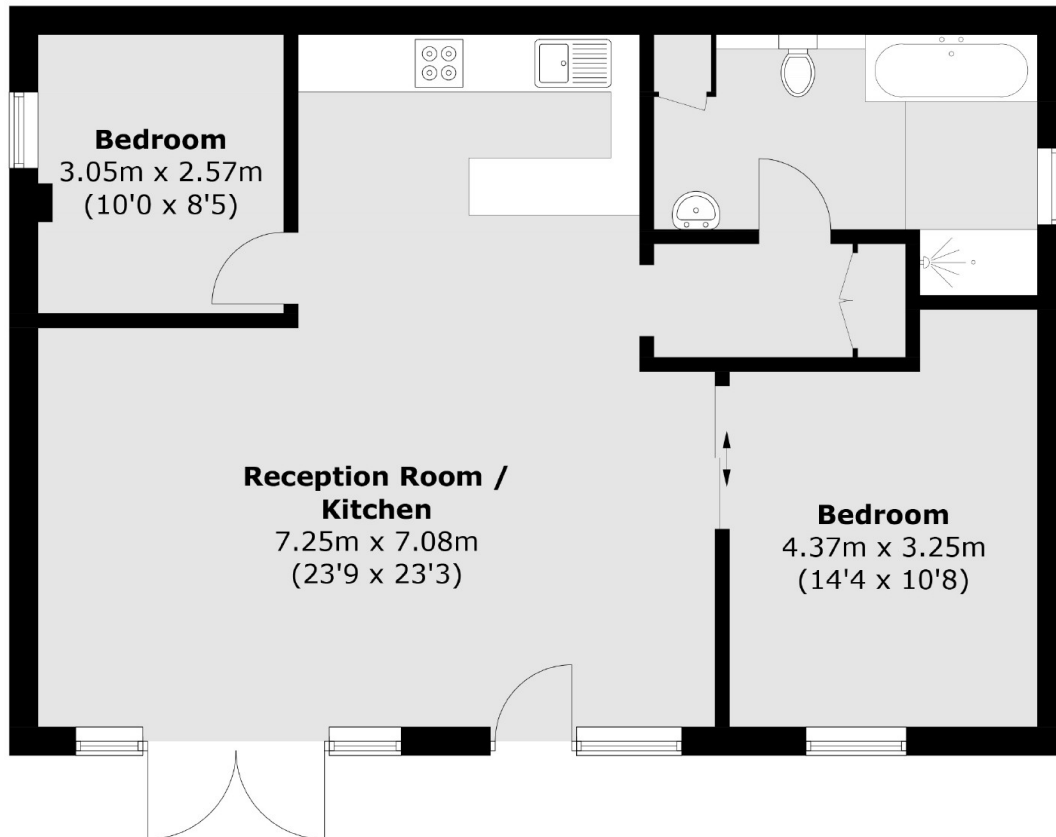
Located in a gated community, this spacious ground floor flat offers a large open-plan kitchen and reception area, two double bedrooms, and a roomy four-piece bathroom. What sets this flat apart from others in the development is its own private garden.

New Crescent Yard is set back from the street and is just a short distance from the high street offering a variety of shops, cafes and eateries as well as access to great transport links including the Overground and Bakerloo Lines.

### Features

- Two Bedrooms
- Share of Freehold
- Private Garden
- Off Street Parking
- Chain Free
- Gated Development

# New Crescent Yard, London, NW10



Total area (approx.): 76.2 sq. m (820.2 sq. ft)