



## Brondesbury Park, NW2

### £650,000

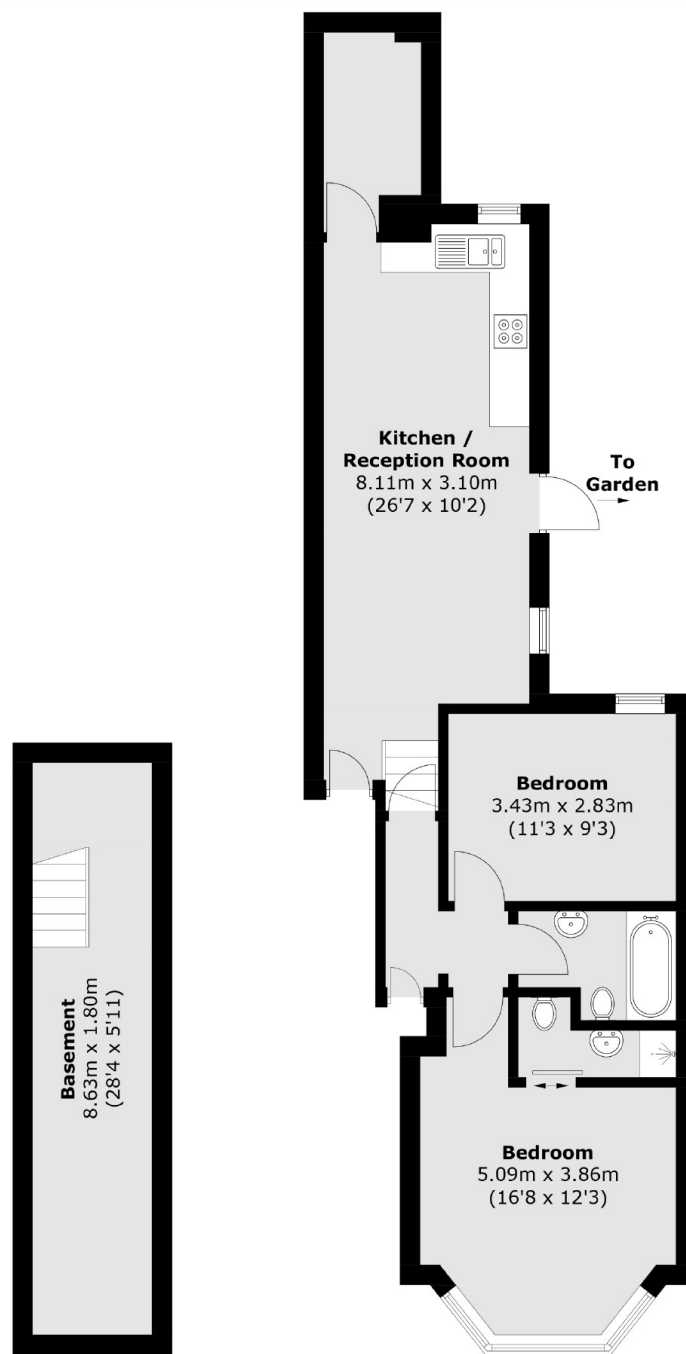
A beautifully presented two double bedroom ground floor flat in a period conversion, with a private garden to the rear. The property showcases a open plan kitchen and living room leading through to the garden, a family bathroom and an en suite with the principal bedroom to the front, and is in good condition throughout.

Brondesbury Park is a tree-lined residential street with access to the shops, cafes, bars and restaurants in Willesden Green and Queen's Park. Transport links include Willesden Green (Jubilee) and Brondesbury Park (Overground), and multiple bus routes.

### Features

- Two Double Bedrooms
- Garden Flat
- Good Condition Throughout
- High Ceilings
- Close To Local Amenities
- Close To Transport Links

# Brondesbury Park, London, NW2



**Basement**

**Ground Floor**

Total area (approx.): 80.3 sq. m (864.3 sq. ft)

## Dexters

Kensal Rise & Queen's Park  
62 Chamberlayne Road  
London  
NW10 3JJ

Sales  
020 8600 3100

Energy Rating: D. We aim to make our particulars both accurate and reliable. However they are not guaranteed; nor do they form part of an offer or contract. If you require clarification on any points then please contact us, especially if you're traveling some distance to view. Please note that appliances and heating systems have not been tested and therefore no warranties can be given as to their good working order.

 **RICS** | Regulated  
Estate Agent  
and Letting Agent

[dexters.co.uk](https://www.dexters.co.uk)