



## Brondesbury Park, NW2

£700,000

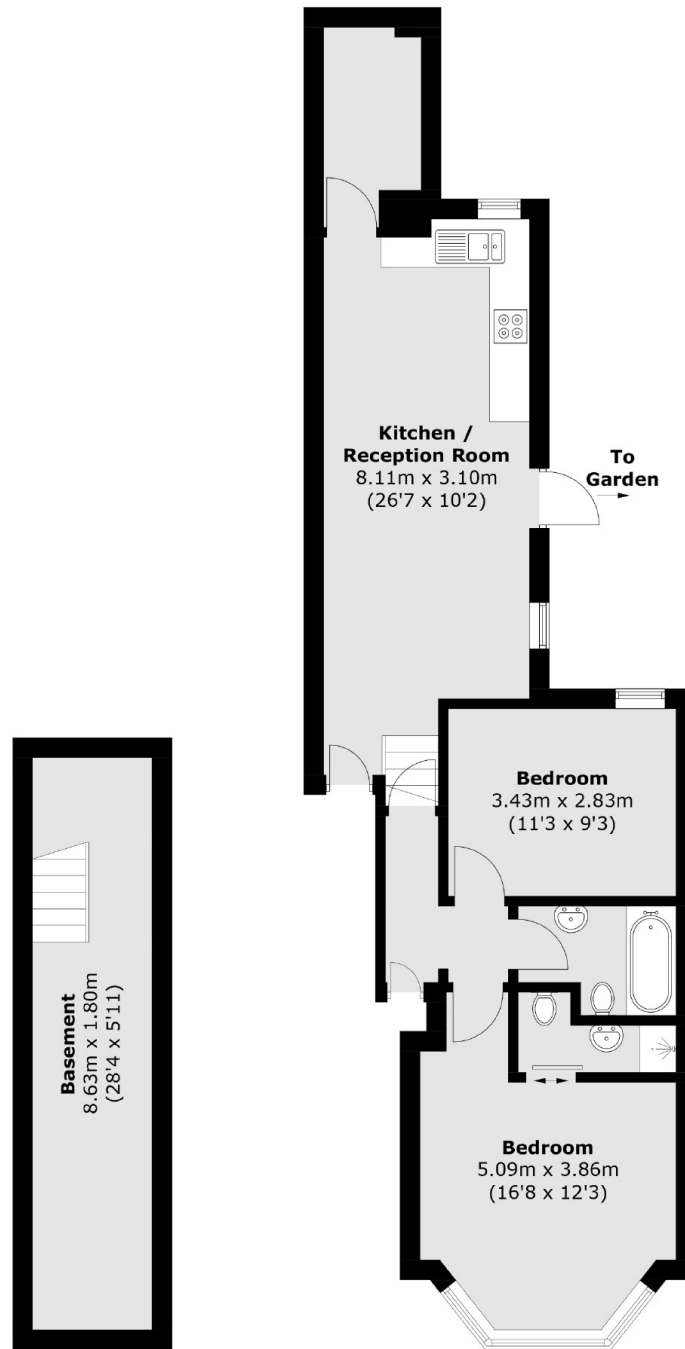
A beautifully presented two double bedroom ground floor flat in a period conversion, with a private garden to the rear. The property showcases a open plan kitchen and living room leading through to the garden, a family bathroom and an en suite with the principal bedroom to the front, and is in good condition throughout.

Brondesbury Park is a tree-lined residential street with access to the shops, cafes, bars and restaurants in Willesden Green and Queen's Park. Transport links include Willesden Green (Jubilee) and Brondesbury Park (Overground), and multiple bus routes.

### Features

- Two Double Bedrooms
- Garden Flat
- Good Condition Throughout
- High Ceilings
- Close To Local Amenities
- Close To Transport Links

# Brondesbury Park, London, NW2



**Basement**

**Ground Floor**

Total area (approx.): 80.3 sq. m (864.3 sq. ft)