

Grange Road, NW10

£450,000

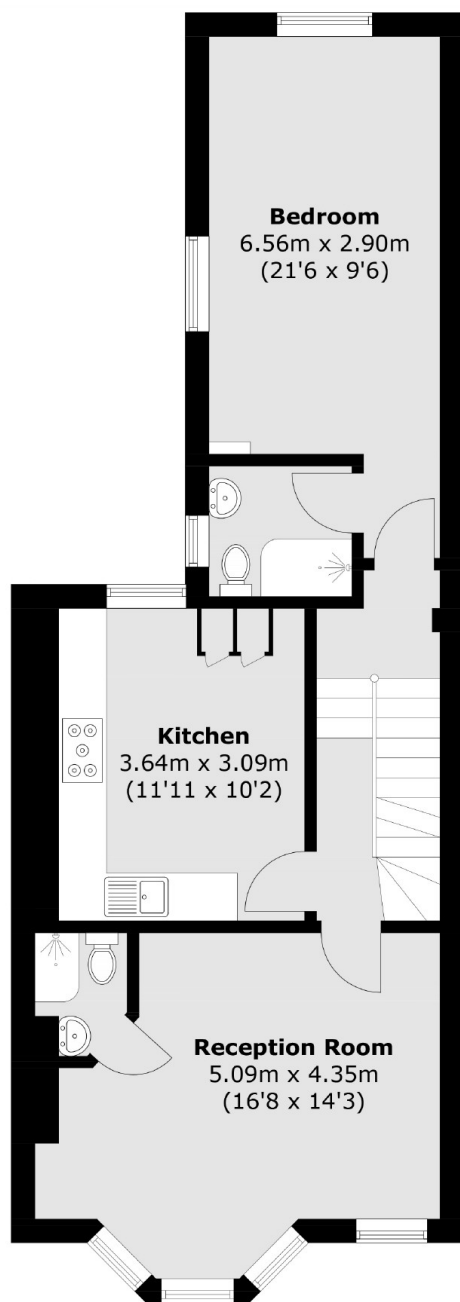
Set in a mid terrace Victorian conversion is this two double bedroom first floor flat, arranged over two floors, having recently been extended and renovated. The property has a large fully integrated kitchen, a reception room to the rear of the property, three bathrooms, and is available chain-free.

Grange Road is located near to Roundwood Park and Willesden High Road, nestled between Kensal Rise and Willesden Green. Transport links include Willesden Green (Jubilee), Dollis Hill (Jubilee), along with multiple bus routes.

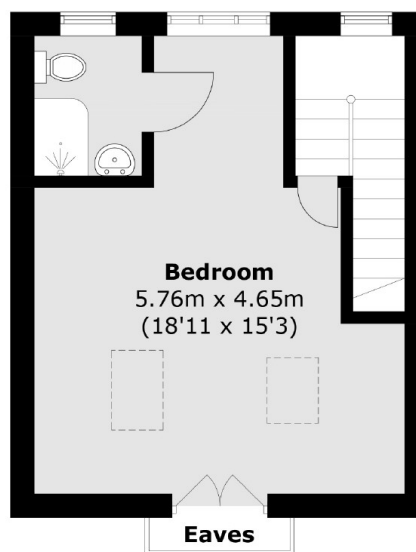
Features

- Two Double Bedrooms
- First Floor Flat
- Separate Eat-In Kitchen
- Chain-Free
- Share Of Freehold
- Close To Local Amenities

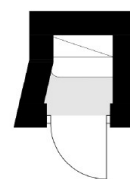
Grange Road, London, NW10



First Floor



Second Floor



Ground Floor

Total area (approx.): 87.9 sq. m (946.1 sq. ft)
(Excluding Eaves)