



Tunley Road, NW10

£415 Per week

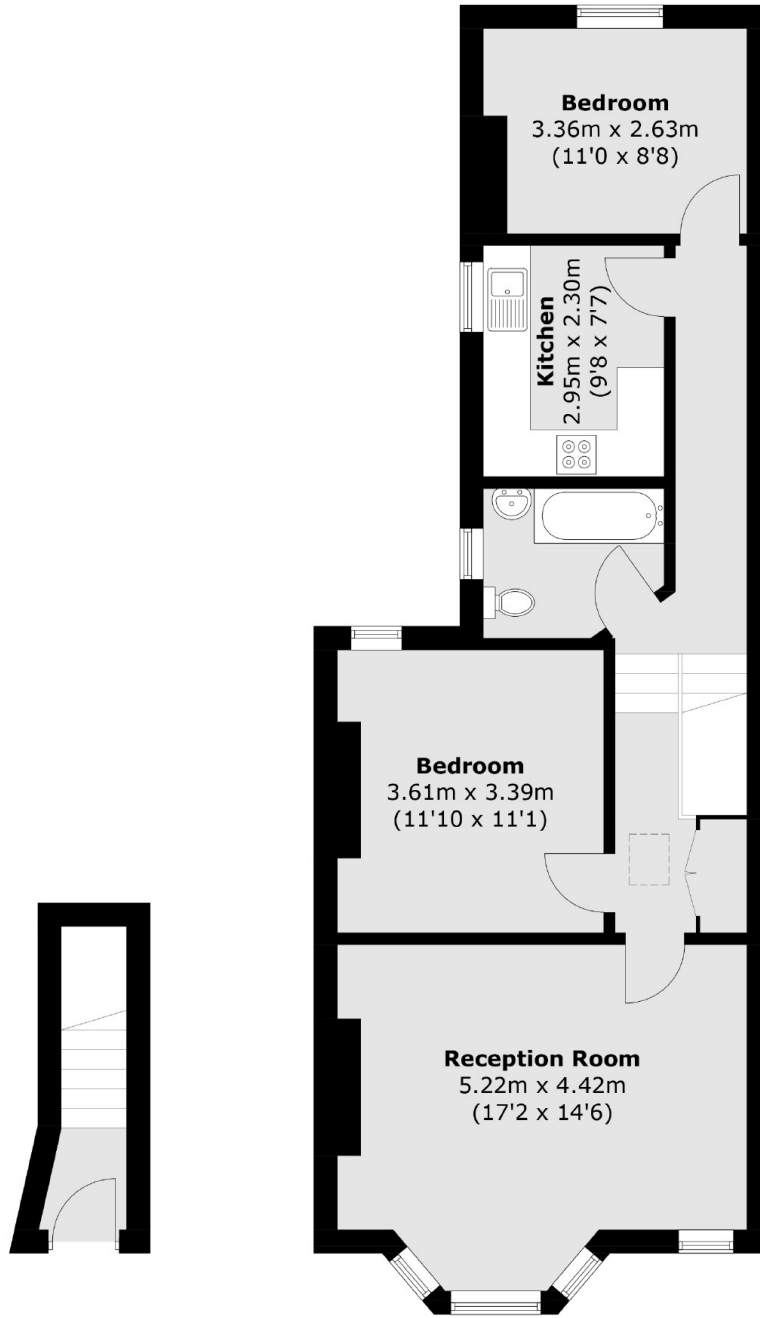
A spacious two bedroom apartment set on the first floor of a well maintained period conversion. Both bedrooms are doubles and the property has a separate kitchen and a very generous reception.

Tunley Road is a quiet residential street in close proximity to the shops, cafes, and local amenities of Harlesden High Street. Transport links include Harlesden (Bakerloo & Overground) and Willesden Junction (Bakerloo & Overground).

Features

- Two Bedrooms
- First Floor
- Separate Kitchen
- Bay Window
- Generous Reception
- Good Condition

Tunley Road,
London, NW10



Ground Floor

First Floor

Total area (approx.): 70.3 sq. m (756.6 sq. ft)