



Holland Road, NW10

£600,000

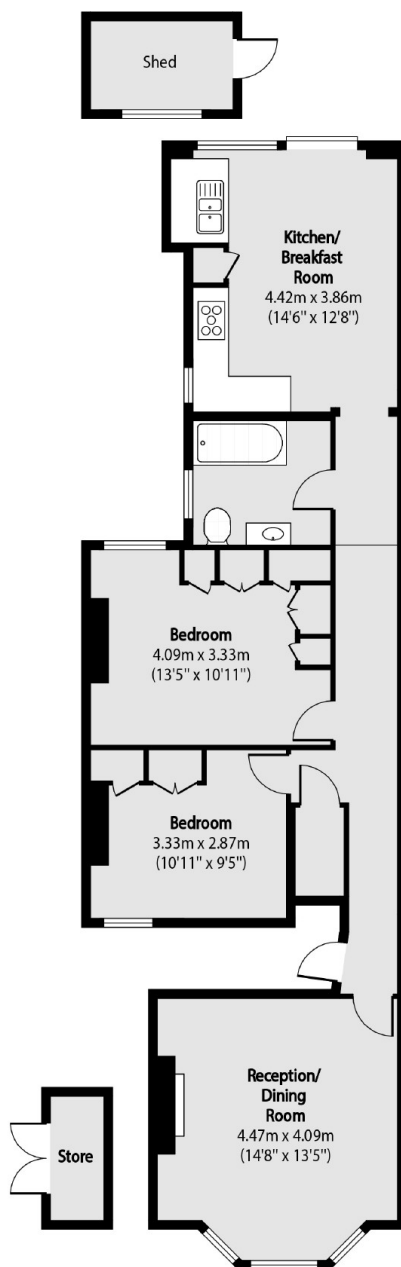
A light and spacious two double bedroom flat in a Victorian conversion with a private garden to the rear and and to the front. The property has a south west facing reception room, high ceilings throughout, a fully integrated kitchen and dining area leading onto the garden, and has the added potential to extend.

Holland Road is a quiet residential street located close to the shops and cafes on the High Street. Roundwood Park and King Edward VII Park are nearby, with transport links including Willesden Junction (Bakerloo & Overground), the newly developed Old Oak Common station, and multiple bus routes.

Features

- Two Double Bedrooms
- Garden Flat
- Separate Eat-In Kitchen
- Good Condition Throughout
- Potential To Extend
- Close To Transport Links

Holland Road, London, NW10



Total area (approx): 75.72 sq m (815 sq. ft)

(Excluding Store & Shed)

Store total area (approx): 1.95 sq m (21 sq. ft)

Shed total area (approx): 3.72 sq m (40 sq. ft)