



**Letchford Gardens, NW10**

**£1,600,000**

**Dexters**



## Letchford Gardens, NW10

A truly impressive five double bedroom mid terraced house built in 2017, arranged over four floors, boasting a high specification throughout. The uniqueness of this property lends itself to the additional floor on the lower ground, with it still maintaining a patio garden on the ground floor and secure access from the street.

Upon entering the property, the hallway leads to the large double reception room, dining area, and semi separate fully integrated kitchen with an island and breakfast bar to the rear. Through bi-folding doors the patio garden is accessed, which would normally be over looked, however on this occasion there is a great amount of privacy. The hallway to the front of the property provides access to the lower ground floor, with two bedrooms, one is able to access a courtyard, a family bathroom, and a utility room. The first floor showcases two bedrooms, both with en suites, and built-in storage. The top floor presents the fifth bedroom, with an en suite, built-in storage, eaves storage, and an east facing roof terrace and garden, perfect for your morning coffee.

Letchford Gardens is a tree-lined residential street, with access to local amenities in Kensal Rise, Queen's Park, Notting Hill and Shepherd's Bush. Transport links include Kensal Green (Bakerloo & Overground) and Willesden Junction (Bakerloo & Overground).

### Features

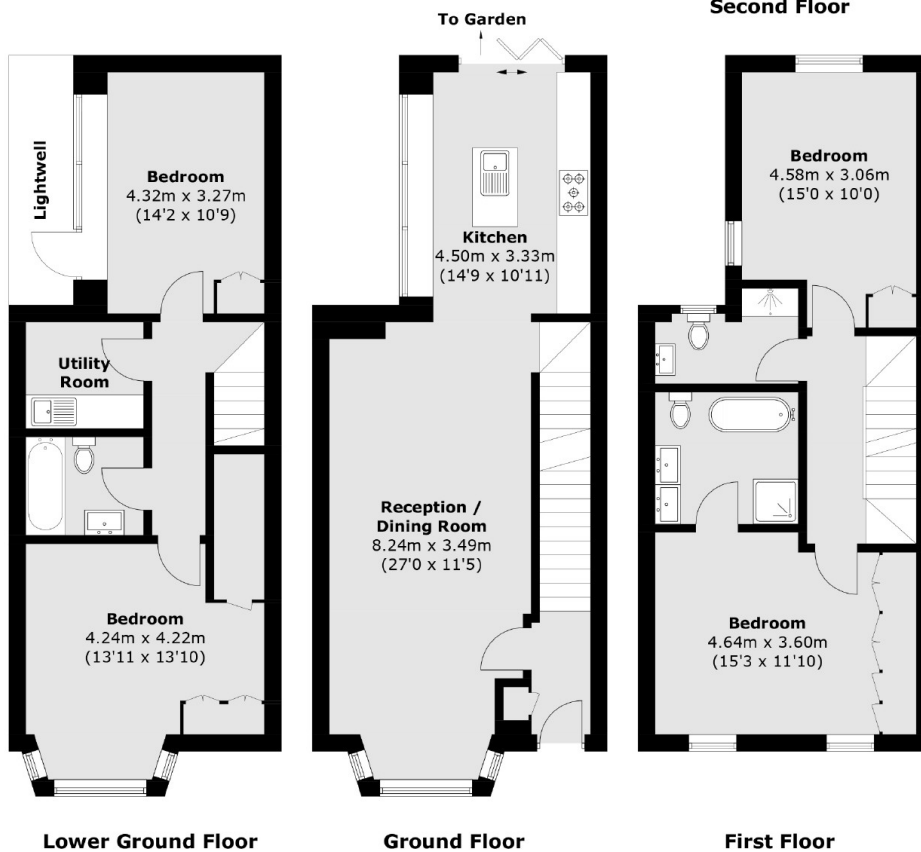
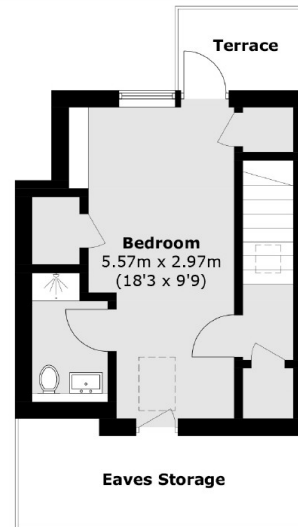
- Freehold
- Five Double Bedrooms
- Four Bathrooms
- Double Reception Room
- High Specification Throughout
- Chain-Free







# Letchford Gardens, London, NW10



Total area (approx.): 170.2 sq. m (1,831.9 sq. ft)  
(Excluding Eaves)

Terrace : 3.3 sq. m (35.5 sq. ft)