



Kings Parade, NW10

£650,000

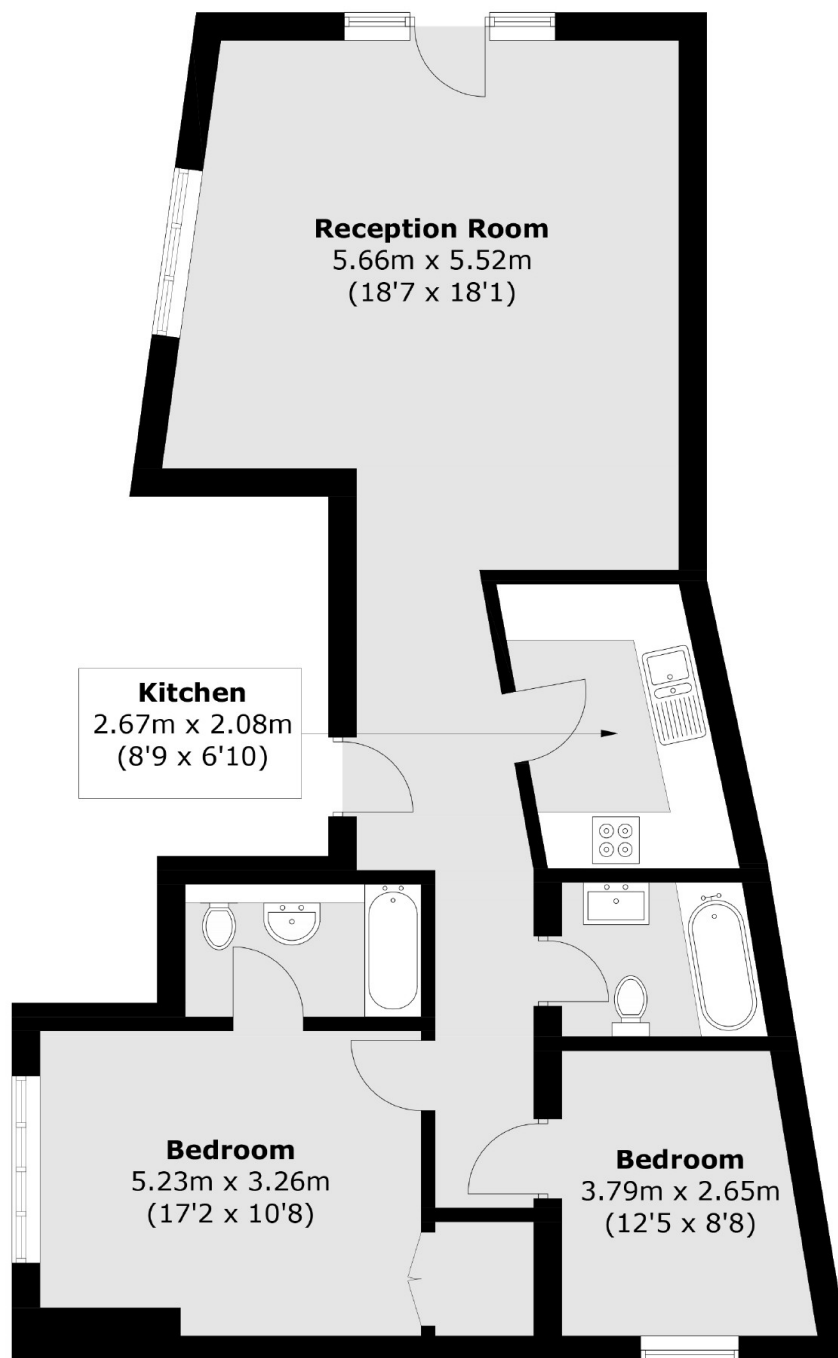
A two bedroom ground floor flat situated in an end-of-terrace property. The flat has a spacious south-facing reception room, a separate kitchen, and two bathrooms, one of which is ensuite. Offered with no upper chain.

Located a short distance from Chamberlayne Road with its array of gastro pubs, eateries, and bars. Transport links include Queens Park tube station (Bakerloo Line), Kensal Rise station (Overground), and multiple bus routes.

Features

- Two Bedrooms
- Two Bathrooms
- Ground Floor
- Close to Amenities
- Leasehold
- Chain Free

Kings Parade, London, NW10



Total area (approx.): 76.2 sq. m (820.2 sq. ft)