



Letchford Gardens, NW10

£1,730 Per week

Dexters



Letchford Gardens, NW10

A beautifully presented five bedroom family home in a great location. Refurbished to a very high standard throughout, the property is arranged over four floors and has four bathrooms, a terrace and a good size patio garden.

On the ground floor is the large open plan reception which leads to the kitchen, which has a large American style fridge freezer, a gas hob and an Island. Through bi-folding doors, the patio garden is a great space to enjoy a sunny afternoon.

On the lower ground floor is two good size bedrooms, a bathroom and a utility room. Upstairs on the first floor is the main bedroom which has built in storage and an en suite with his and hers sinks. There is a further shower room and the fourth double bedroom.

On the second floor is another good size double bedroom with en suite and access to a terrace. The property has large windows and wooden floors and can be available for long or short term rental.

Close to local amenities and within easy reach of transport, the nearest stations are Willesden Junction and Kensal Green.

Features

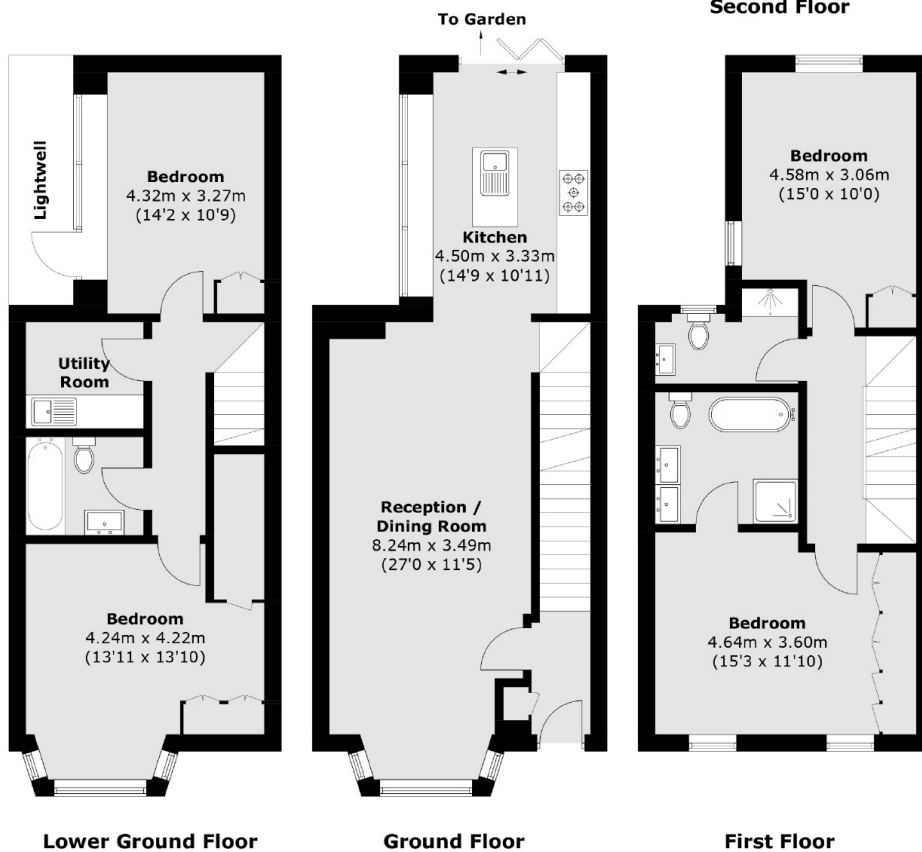
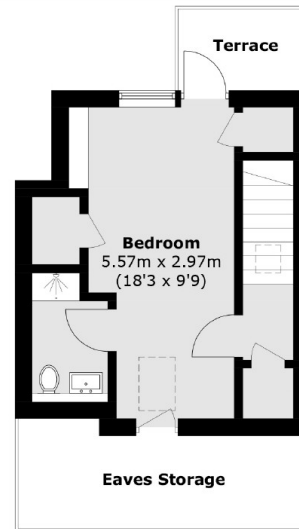
- Five Bedrooms
- Four Bathrooms
- Modern
- Patio Garden
- Terrace
- Spacious







Letchford Gardens, London, NW10



Total area (approx.): 170.2 sq. m (1,831.9 sq. ft)
(Excluding Eaves)
Terrace : 3.3 sq. m (35.5 sq. ft)