

Rigeley Mews, NW10
£1,450,000

Dexters



Rigeley Mews, NW10

An exceptional boutique five double bedroom modern mews house, configured over three floors, intelligently designed to a high specification throughout.

The property is accessed from the ground floor with the hallway leading to the fully integrated semi open kitchen, with the dining area and reception room providing access to the south facing courtyard garden. A study/multipurpose room is located on this level, with separate access to the garden. The first floor showcases three large bedrooms, one with an en suite, and a family bathroom. The lower ground floor hosts two bedrooms, a shower room, a utility room, and a terrace and light well, maximising natural light throughout.

10 Year New Build Warranty / Site CCTV / Gas Central Heating / Underfloor Heating Throughout / Air Conditioning Ready

Rigeley Mews is a unique development access from Letchford Gardens, close to local amenities in Kensal Rise, Queen's Park, Notting Hill and Shepherd's Bush. Transport links include Kensal Green (Bakerloo & Overground) and Willesden Junction (Bakerloo & Overground), the newly developed Old Oak Common station, and multiple bus routes.

Features

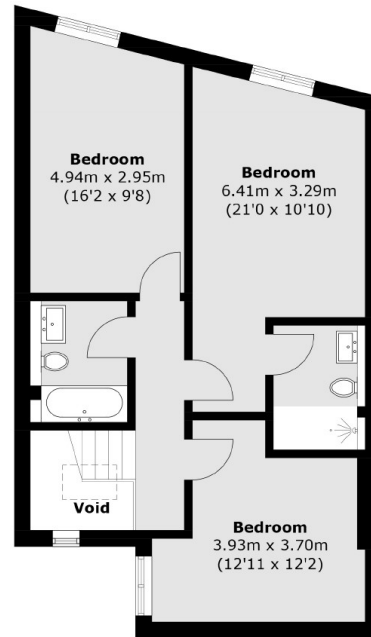
- Freehold
- Five Double Bedrooms
- High Specification
- South Facing Garden
- Allocated Parking & EV Charger
- Secure Gated Development



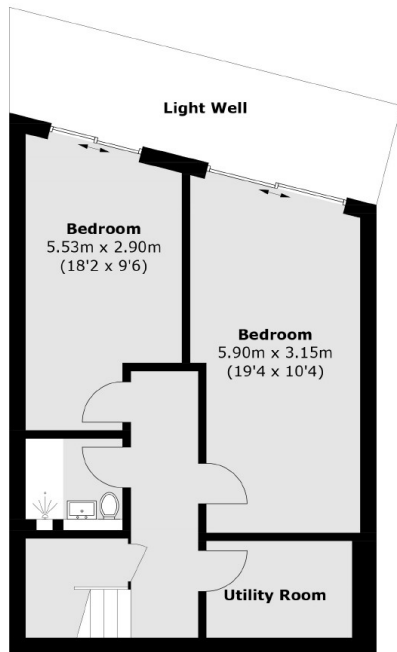




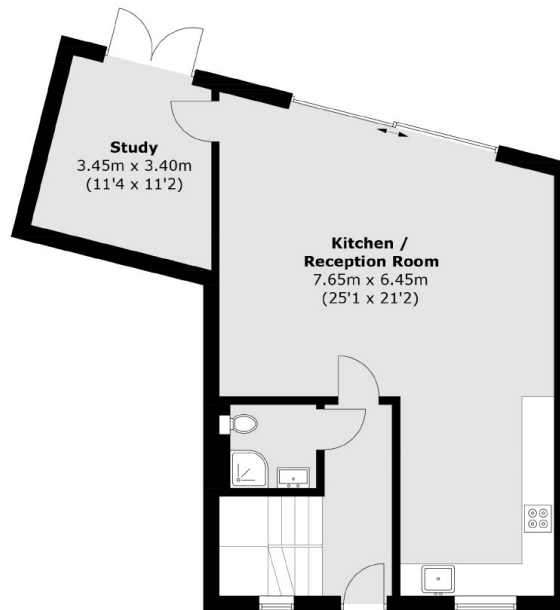
Rigeley Mews, London, NW10



First Floor



Lower Ground Floor



Ground Floor

Total area (approx.): 175.3 sq. m (1,887.0 sq. ft)
(Excluding Lightwell)