



Whitmore Gardens, NW10

£1,400,000

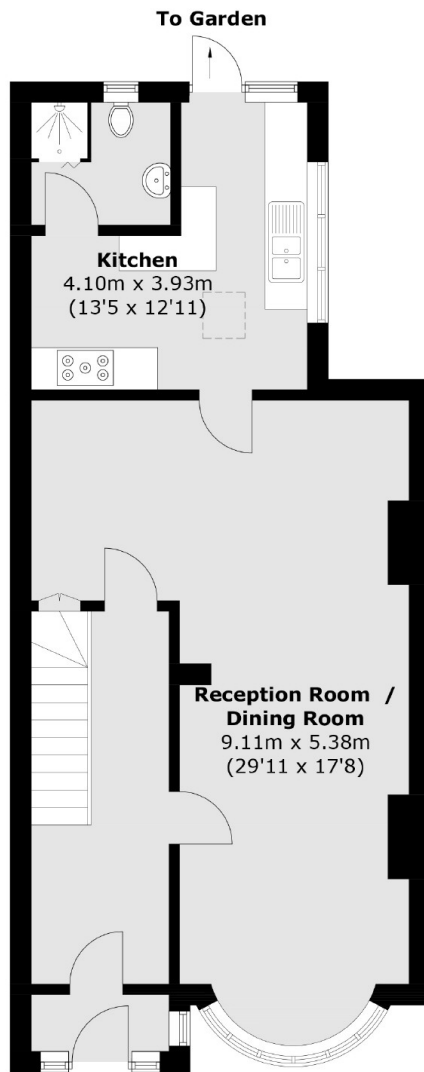
A light and spacious four bedroom end of terrace house in the heart of Kensal Rise, arranged over three floors, with off-street parking and side access to the rear garage and garden.

Whitmore Gardens is a tree-lined residential street in prime Kensal Rise, with access to the shops, cafes, bars and restaurants on College Road and Chamberlayne Road, and the green open spaces in Queen's Park. Transport links include Kensal Rise (Overground) and Kensal Green (Bakerloo & Overground), and multiple bus routes.

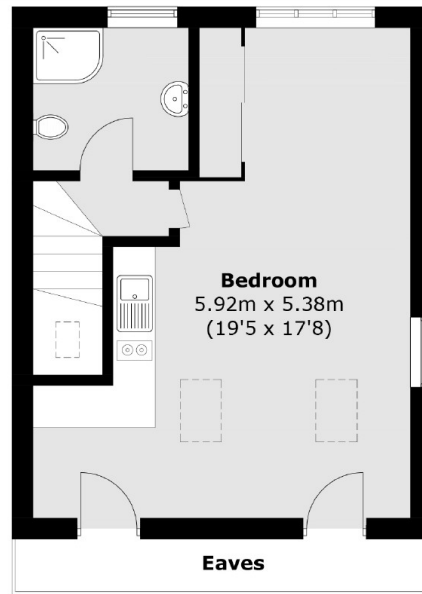
Features

- Freehold
- Four Bedrooms
- Double Reception Room
- Off-Street Parking
- Side Access & Garage
- Close To Local Amenities

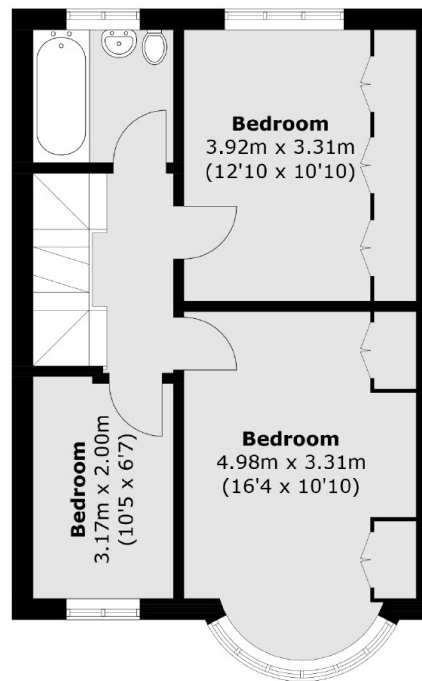
Whitmore Gardens, London, NW10



Ground Floor



Second Floor



First Floor

Total area (approx.): 148.9 sq. m (1,602.6 sq. ft)
(Excluding Eaves)