



Regent Street, NW10

£800,000

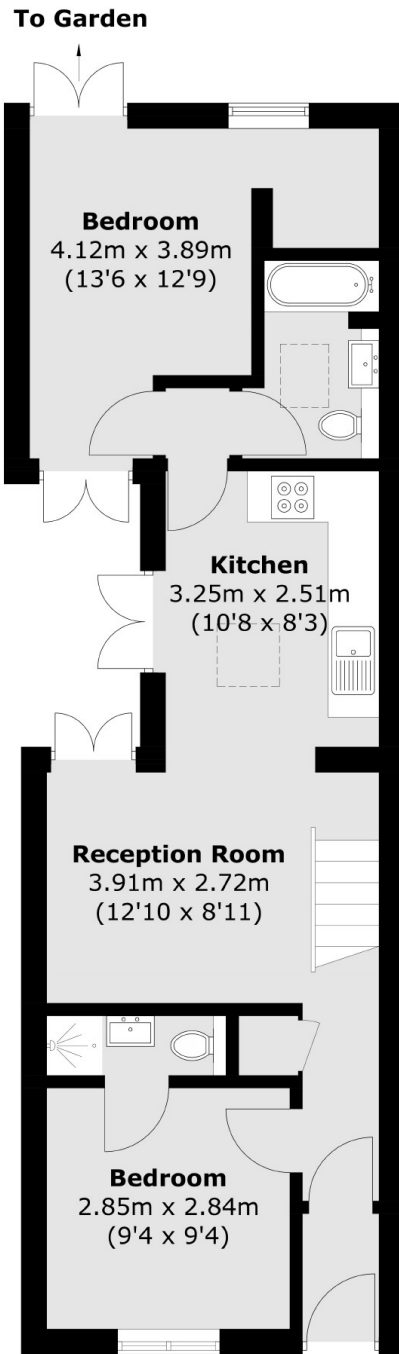
A unique two bedroom semi detached cottage in the heart of Kensal Rise. The property showcases a mezzanine floor, a semi open plan kitchen and reception room, with a south facing garden, in good condition throughout, and is available chain-free.

Regent Street is ideally located close to the shops, cafes, restaurants and bars in Kensal Rise, Queen's Park, and Notting Hill. Transport links include Kensal Green (Bakerloo Overground), Kensal Rise (Overground), and Queen's Park (Bakerloo and Overground).

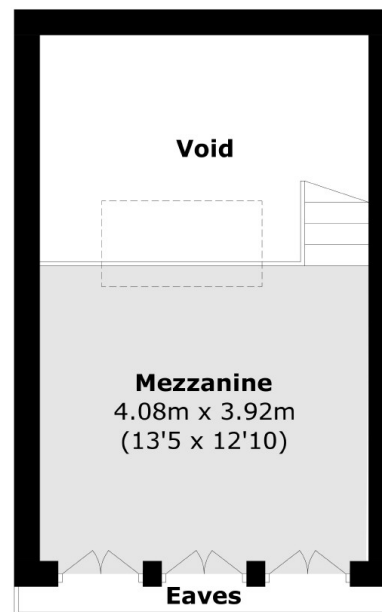
Features

- Freehold
- Two Bedrooms
- Mezzanine Floor
- South Facing Garden
- Chain-Free
- Close To Local Amenities

Regent Street, London, NW10



Ground Floor



First Floor

Total area (approx.): 66.3 sq. m (713.6 sq. ft)
(Excluding Void & Eaves)