



## Regent Street, NW10

£775,000

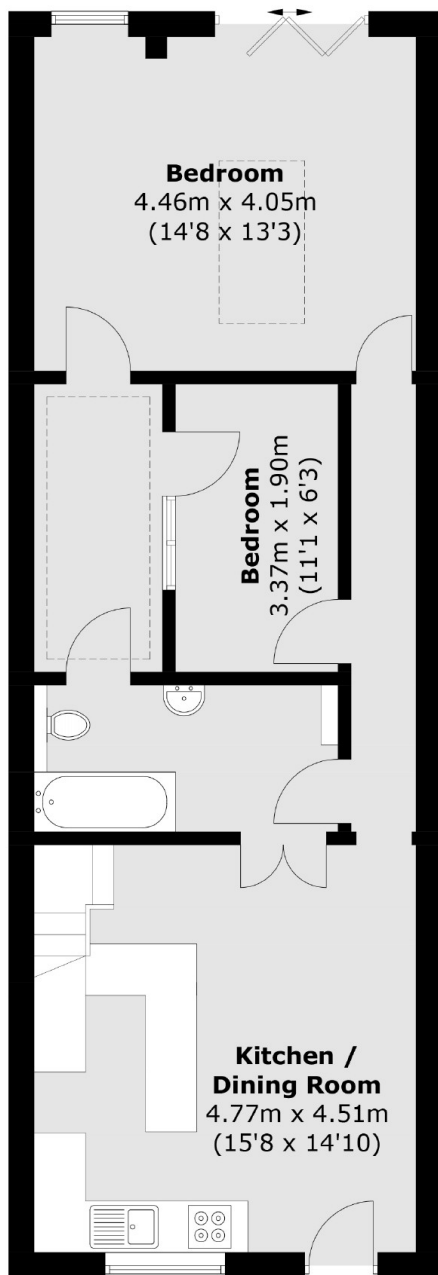
A unique two bedroom semi detached cottage in the heart of Kensal Rise. The property showcases a mezzanine floor, ornate woodwork throughout, an open plan kitchen and reception room, with a south facing garden, and is available chain-free.

Regent Street is ideally located close to the shops, cafes, restaurants and bars in Kensal Rise, Queen's Park, and Notting Hill. Transport links include Kensal Green (Bakerloo Overground), Kensal Rise (Overground), and Queen's Park (Bakerloo and Overground).

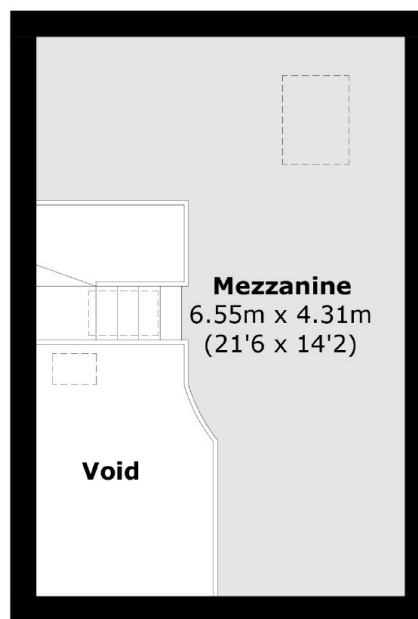
### Features

- Freehold
- Two Bedrooms
- Mezzanine Floor
- South Facing Garden
- Chain-Free
- Close To Local Amenities

# Regent Street, London, NW10



**Ground Floor**



**Mezzanine**

Total area (approx.): 84.3 sq. m (907.4 sq. ft)  
(Excluding Void)