

Oldfield Road, NW10

£775,000

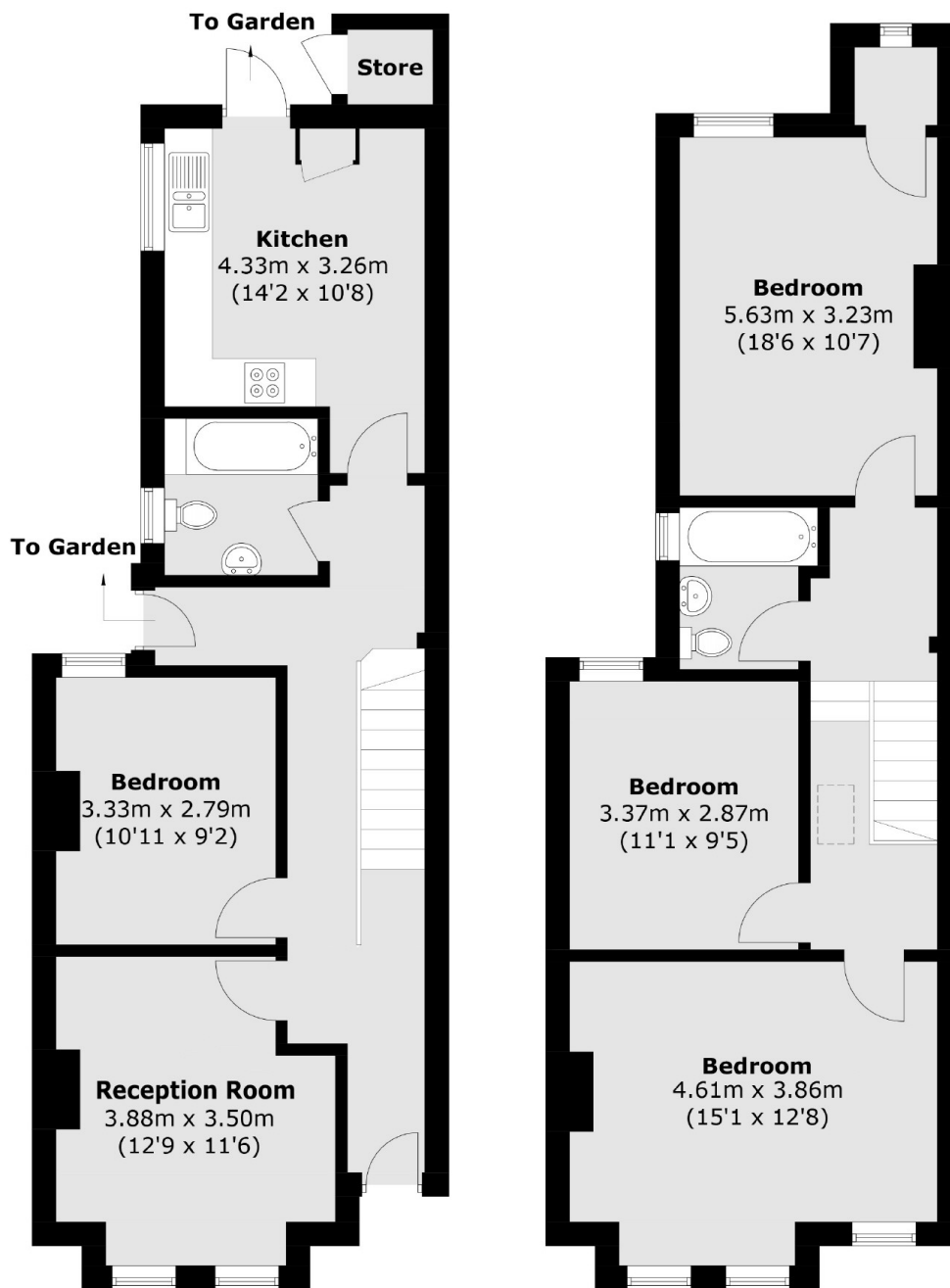
A recently refurbished and well presented four double bedroom mid terraced Victorian house, arranged over two floors, with an east facing garden. The property has a separate kitchen, two bathrooms, has the potential to be extended, and is available chain-free.

Oldfield Road is a residential street in close proximity to the shops and amenities in Harlesden, and next to Roundwood Park. Transport links include Harlesden (Bakerloo & Overground) and Willesden Junction (Bakerloo & Overground).

Features

- Freehold
- Four Double Bedrooms
- Separate Kitchen
- Potential To Extend
- Chain-Free
- Next To Roundwood Park

Oldfield Road, London, NW10



Ground Floor

First Floor

Total area (approx.): 110.8 sq. m (1192.6 sq. ft)

Store : 1.0 sq. m (10.7 sq. ft)