



Glynfield Road, NW10

£699,000

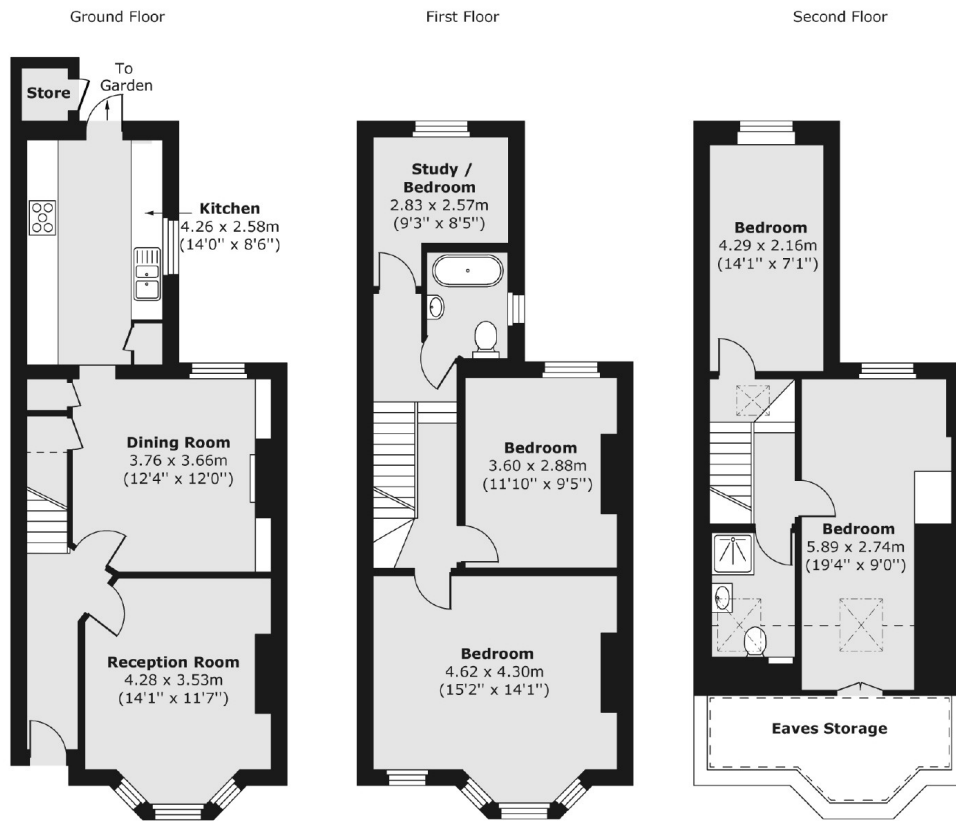
A truly unique five bedroom family home, arranged over three floors of a Victorian house, with a west facing garden. The property benefits from having a reception room and dining room, a separate kitchen, high ceilings throughout, and comes with the added potential to extend.

Glynfield Road is a popular street located near to Roundwood Park and close to nearby shops, cafes, and restaurants in both Harlesden and Willesden. Transport links include Dollis Hill (Jubilee) and Harlesden (Bakerloo & Overground).

Features

- Freehold
- Five Bedrooms
- Separate Kitchen
- West Facing Garden
- Chain-Free
- Close To Local Amenities

Glynfield Road, London, NW10



Total area (approx.) 126.75 sq. m (1,364 sq. ft)
Store area (approx.) 0.89 sq. m (10 sq. ft)