



## Glynfield Road, NW10

£799,500

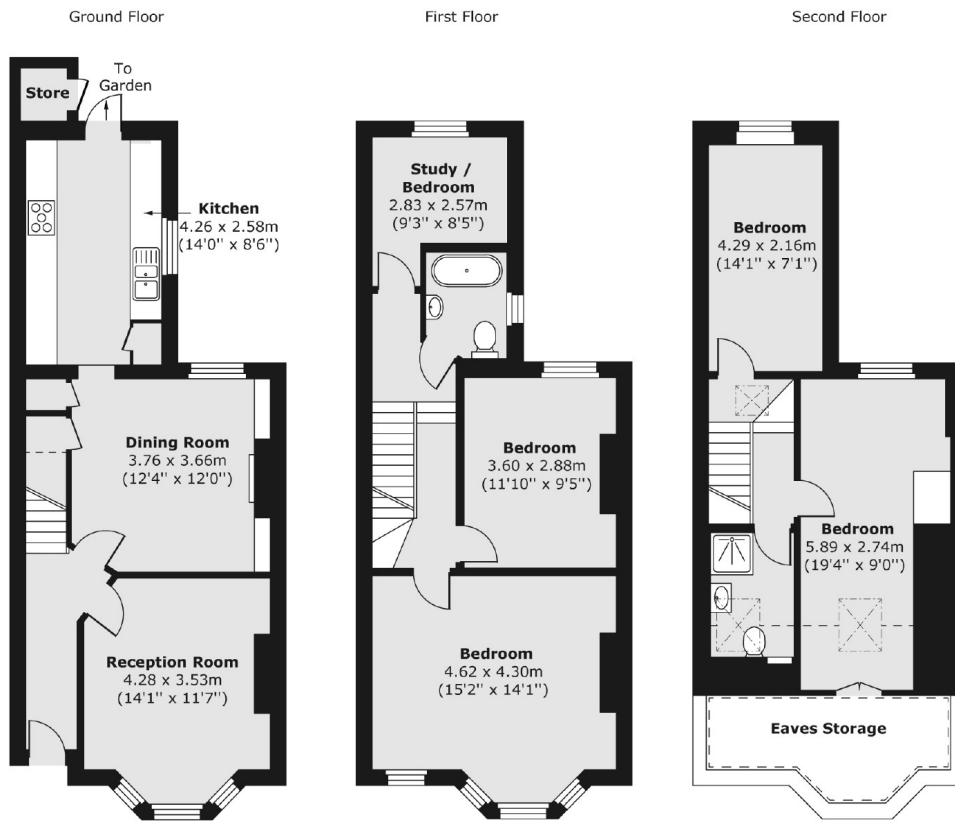
A truly unique five bedroom family home, incorporating three floors of a Victorian house, with a west-facing garden. The property benefits from having a separate reception room and dining room, a separate kitchen, high ceilings throughout, and comes with the added potential to extend.

Glynfield Road is a popular street located near to Roundwood Park and close to nearby shops, cafes, and restaurants in both Harlesden and Willesden. Transport links include Dollis Hill(Jubilee) and Harlesden(Bakerloo & Overground).

### Features

- Freehold
- Five Bedrooms
- Two Bathrooms
- Private West-Facing Garden
- Separate Kitchen
- Close To Local Amenities

# Glynfield Road, London, NW10



Total area (approx.) 126.75 sq. m (1,364 sq. ft)  
Store area (approx.) 0.89 sq. m (10 sq. ft)