



Wrentham Avenue, NW10

£553 Per week

This modern two bedroom flat, situated on a residential tree lined street is perfect for a single or professional couple. The flat has a spacious reception room with large windows, separate kitchen, bathroom and a beautiful garden.

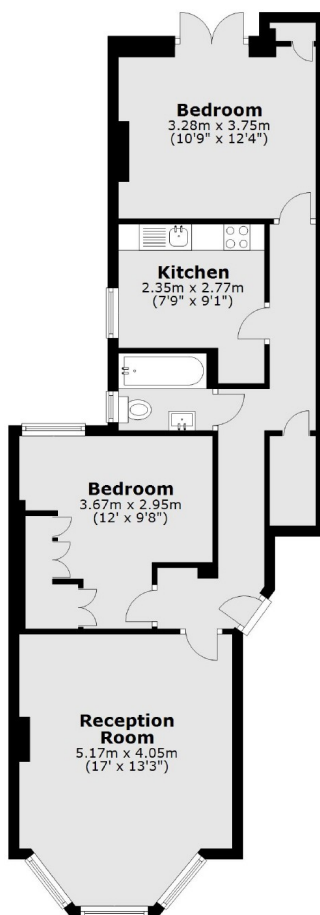
Wrentham Avenue is close to the local transport links, shops and cafes of Chamberlayne Road and Salusbury Road and Kensal Rise Station.

Features

Period Conversion
Ground Floor Flat
Two Bedroom
Split Level
Modern Interiors
Great Location

Wrentham Avenue,
London, NW10

Ground Floor



Total area: approx. 66.2 sq. metres (712.6 sq. feet)