



**Rigeley Road, NW10**

**£1,150,000**

**Dexters**



## Rigeley Road, NW10

An exceptional boutique two double bedroom modern mews house, configured over three floors, intelligently designed to a high specification throughout.

The property is accessed from the ground floor with the hallway leading to the fully integrated semi open kitchen, with the dining area and reception room providing access to the south facing courtyard garden. The first floor showcases a large bedroom with an en suite bathroom, with the lower ground floor hosting another bedroom and en suite, and terrace and light well, maximising natural light throughout.

10 Year New Build Warranty / Site CCTV / Gas Central Heating / Underfloor Heating Throughout / Air Conditioning Ready

Rigeley Mews is a unique development located on Letchford Gardens, close to local amenities in Kensal Rise, Queen's Park, Notting Hill and Shepherd's Bush. Transport links include Kensal Green (Bakerloo & Overground) and Willesden Junction (Bakerloo & Overground), the newly developed Old Oak Common station, and multiple bus routes.

### Features

- Freehold
- Two Double Bedrooms
- High Specification
- South Facing Garden
- Allocated Parking & EV Charger
- Secure Gated Development





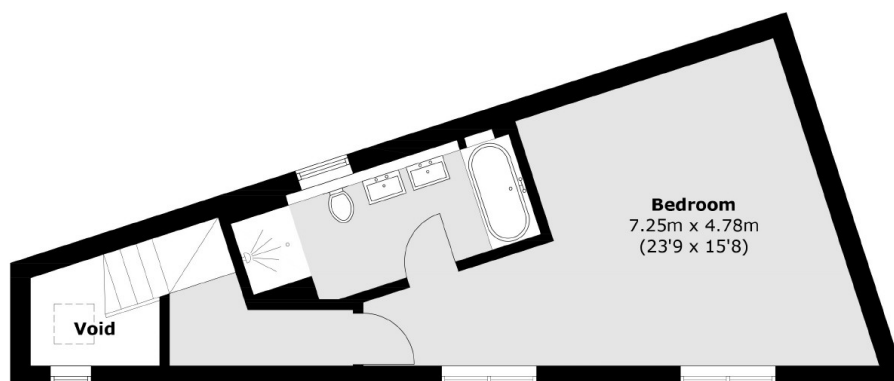




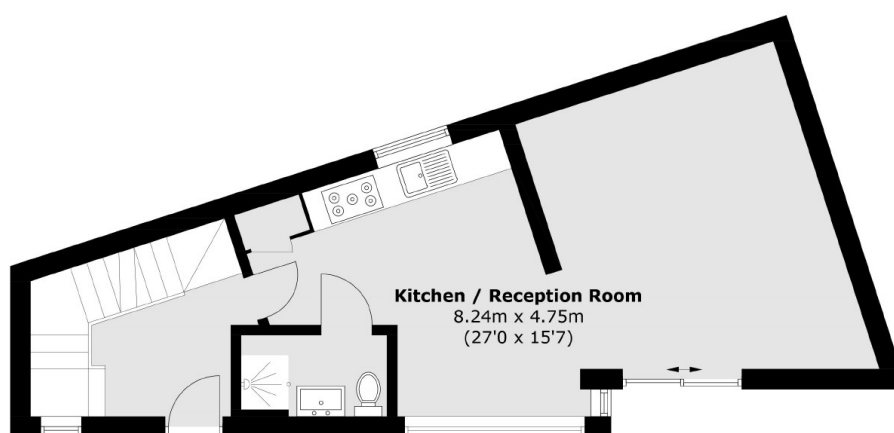




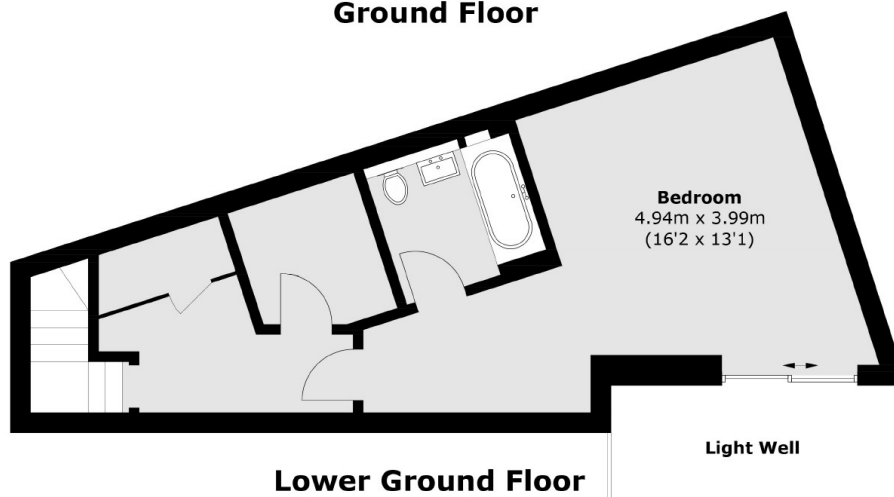
# Rigeley Road, London, NW10



**First Floor**



**Ground Floor**



**Lower Ground Floor**

Total area (approx.): 124.2 sq. m (1,336.8 sq. ft)