



## Mortimer Road, NW10

£449,000

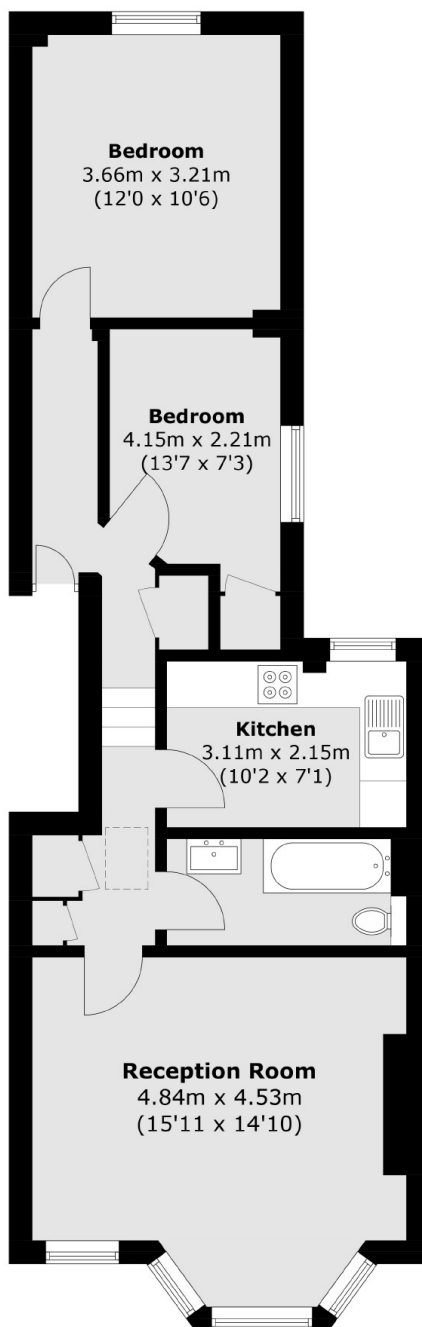
A spacious two double bedroom first floor flat in a Victorian conversion. The property provides a large reception room to the front occupying the bay window, has a separate kitchen, is available chain-free, and has the potential to be extended into the loft.

Mortimer Road provides access to the shops, cafes, restaurants and bars on Chamberlayne Road and College Road, with Queen's Park nearby. Transport links include Kensal Green (Bakerloo & Overground) and Kensal Rise (Overground).

### Features

- Two Double Bedrooms
- First Floor Flat
- Separate Kitchen
- Potential To Extend
- Chain-Free
- Close To Local Amenities

Mortimer Road,  
London, NW10



Total area (approx.): 61.1 sq. m (657.7 sq. ft)

**Dexters**

Kensal Rise & Queen's Park  
62 Chamberlayne Road  
London  
NW10 3JJ  
Sales  
020 8600 3100

Energy Rating: . We aim to make our particulars both accurate and reliable. However they are not guaranteed; nor do they form part of an offer or contract. If you require clarification on any points then please contact us, especially if you're traveling some distance to view. Please note that appliances and heating systems have not been tested and therefore no warranties can be given as to their good working order.

 **RICS** | Regulated  
Estate Agent  
and Letting Agent

[dexters.co.uk](http://dexters.co.uk)