



## Staverton Road, NW2

£725,000

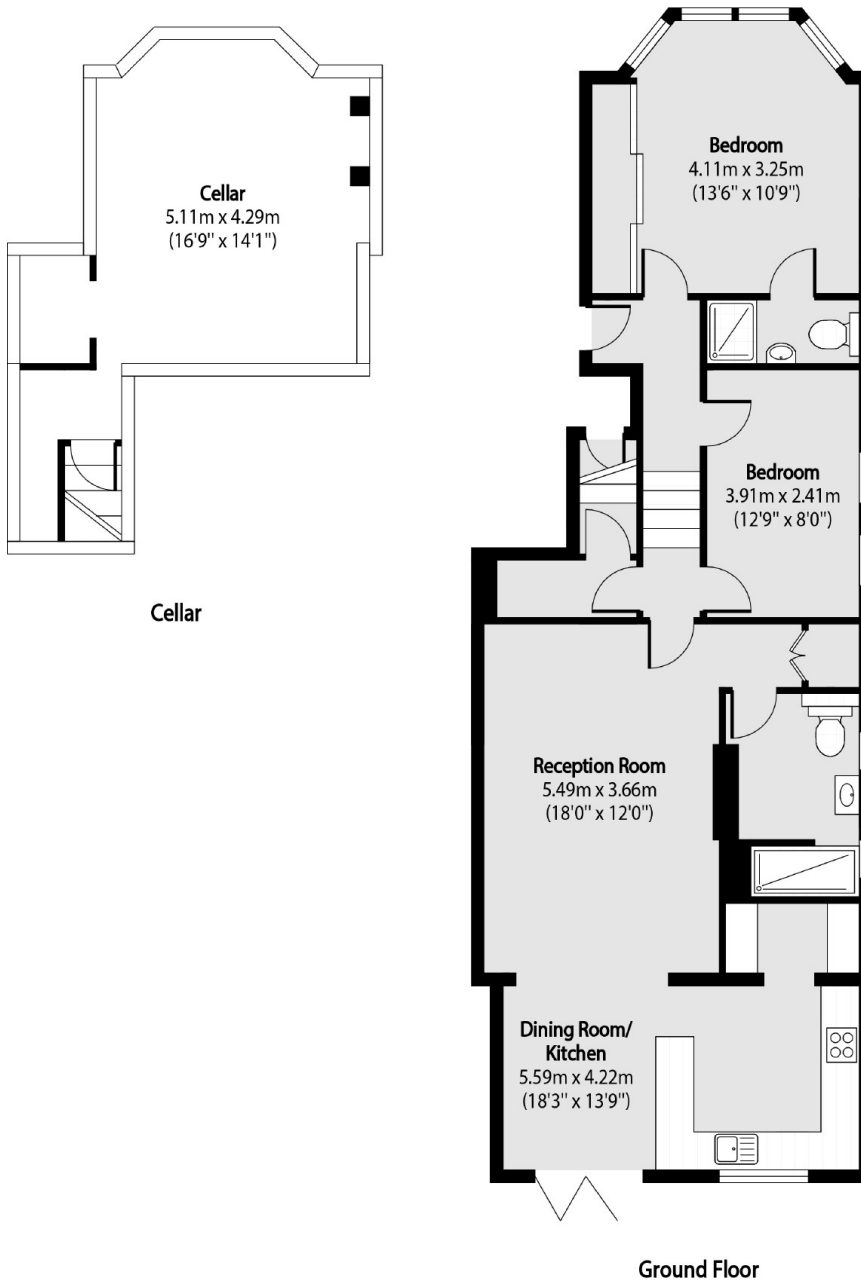
Set within a period conversion is this beautifully presented two double bedroom flat on the ground floor with a south west facing garden. The property has a fully integrated kitchen to the rear with a dining area, storage throughout the property including a cellar, and is in close proximity to the green open spaces of Queen's Park.

Staverton Road is a tree-lined residential street with access to the shops, cafes, bars and restaurants in Willesden Green and Queen's Park. Transport links include Willesden Green (Jubilee) and Brondesbury Park (Overground), and multiple bus routes.

### Features

- Two Double Bedrooms
- South West Facing Garden
- Excellent Condition
- Semi Open Kitchen & Reception
- Storage Throughout
- Close To Local Amenities

# Staverton Road, London, NW2



Total area (approx): 89.13 sq m (959 sq. ft)

Cellar Total area (approx): 26.93 sq m (280 sq. ft)