



## Holland Road, NW10

£650,000

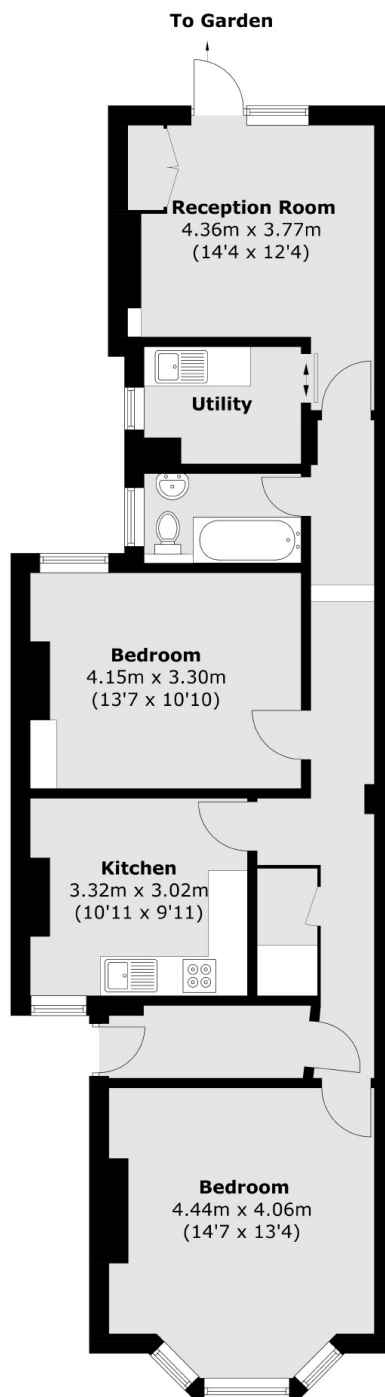
Set within a Victorian conversion is this two double bedroom flat, with access to its own garden to the rear. The property has a separate eat-in kitchen, a utility room, a reception room with direct access to the garden, has the potential to be extended, and is available chain-free.

Holland Road is a quiet residential street located close to the shops and cafes on the High Street. Roundwood Park and King Edward VII Park are nearby, with transport links including Willesden Junction (Bakerloo & Overground), the newly developed Old Oak Common station, and multiple bus routes.

### Features

- Two Double Bedrooms
- Garden Flat
- Separate Eat-In Kitchen
- Chain-Free
- Potential To Extend
- Close To Transport Links

# Holland Road, London, NW10



Total area (approx.): 81.6 sq. m (878.3 sq. ft)