



Leghorn Road, NW10

£449,950

A spacious two bedroom flat on the ground floor of a Victorian conversion, with a south west facing garden. The property includes a large reception room to the front with a bay window, a separate kitchen, a conservatory, and is available chain-free.

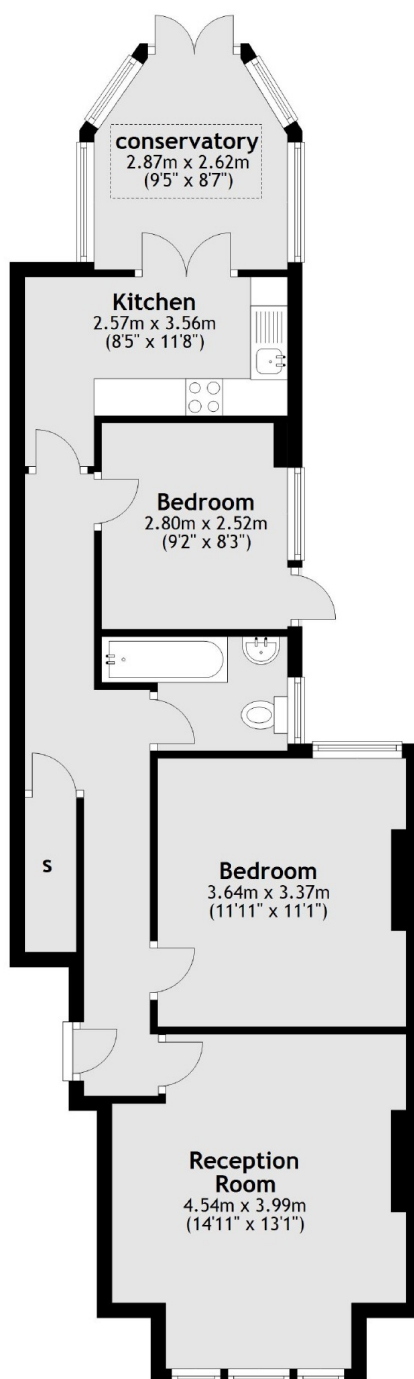
Leghorn Road is a tree-lined street in close proximity to the shops, cafes, bars and restaurants on Chamberlayne Road and College Road. Transport links include Willesden Junction (Bakerloo & Overground), Kensal Rise (Overground), Kensal Green (Bakerloo & Overground).

Features

- Two Double Bedrooms
- Separate Kitchen
- Conservatory
- Private Garden
- Chain-Free
- Close To Transport Links

Leghorn Road, London, NW10

Ground Floor



Total area: approx. 65.9 sq. metres (709.3 sq. feet)