



## Holberton Gardens, NW10

### £750,000

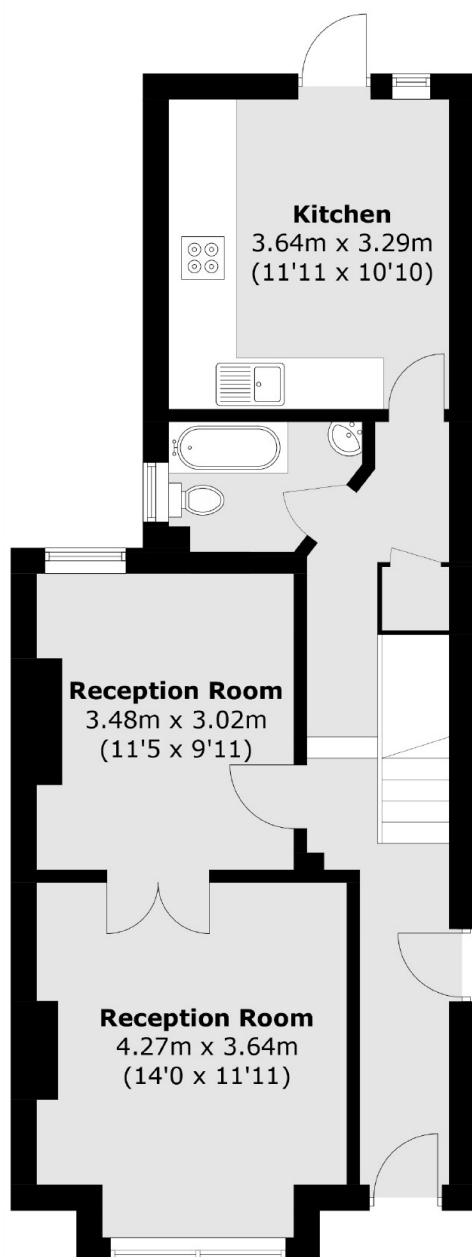
A spacious three double bedroom mid terraced Victorian house, arranged over two floors with the potential to be extended. The property provides two reception rooms, a separate kitchen to the rear, two bathrooms, and is available chain-free.

Holberton Gardens is a tree-lined residential street, with access to local amenities in Kensal Rise, Queen's Park, Notting Hill and Shepherd's Bush. Transport links include Kensal Green (Bakerloo & Overground) and Willesden Junction (Bakerloo & Overground).

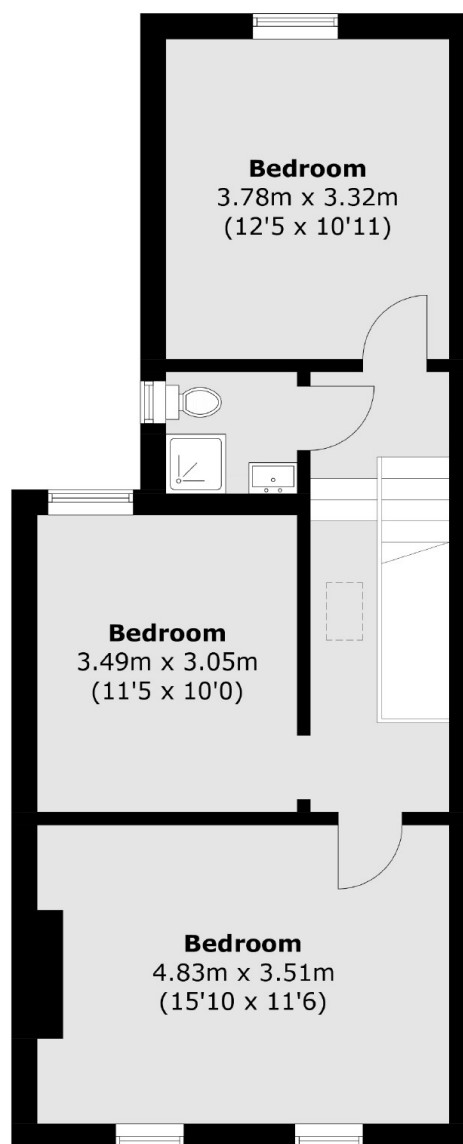
### Features

- Freehold
- Three Double Bedrooms
- Two Reception Rooms
- Potential To Extend
- Chain-Free
- Close To Transport Links

# Holberton Gardens, London, NW10



**Ground Floor**



**First Floor**

Total area (approx.): 107.9 sq. m (1,161.5 sq. ft)