



## St. Margarets Road, NW10

£392 Per week

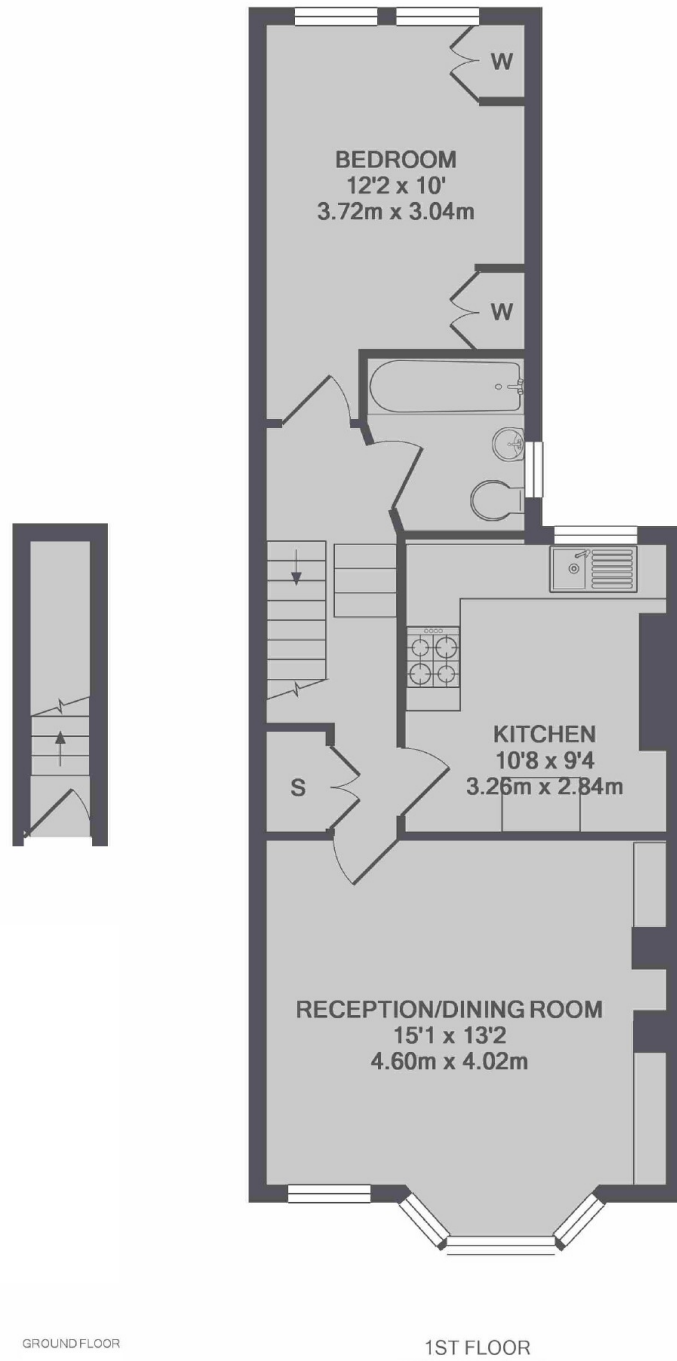
A beautifully presented one double bedroom first floor flat to let, perfect for a single professional or couple. The apartment offers a large reception with bay windows, double bedroom with built-in storage, a separate kitchen and modern bathroom.

St. Margarets Road is ideally located for Chamberlayne Road, College Road and Salusbury Road's many restaurants, pubs, vintage shops with Kensal Rise and Kensal Green Station plus numerous bus routes.

### Features

- One Double Bedroom
- Separate Kitchen
- Modern Bathroom
- First Floor Flat
- Built-in Storage
- Excellent Location

St. Margarets Road,  
London, NW10



GROUND FLOOR

1ST FLOOR

TOTAL APPROX. FLOOR AREA 588 SQ.FT. (54.6 SQ.M.)

**Dexters**

Kensal Rise & Queen's Park  
62 Chamberlayne Road  
London  
NW10 3JJ  
Lettings  
020 8600 3101

Energy Rating: E. We aim to make our particulars both accurate and reliable. However they are not guaranteed; nor do they form part of an offer or contract. If you require clarification on any points then please contact us, especially if you're traveling some distance to view. Please note that appliances and heating systems have not been tested and therefore no warranties can be given as to their good working order.

 **RICS** | Regulated  
Estate Agent  
and Letting Agent

[dexters.co.uk](http://dexters.co.uk)