



College Road, NW10

£535,000

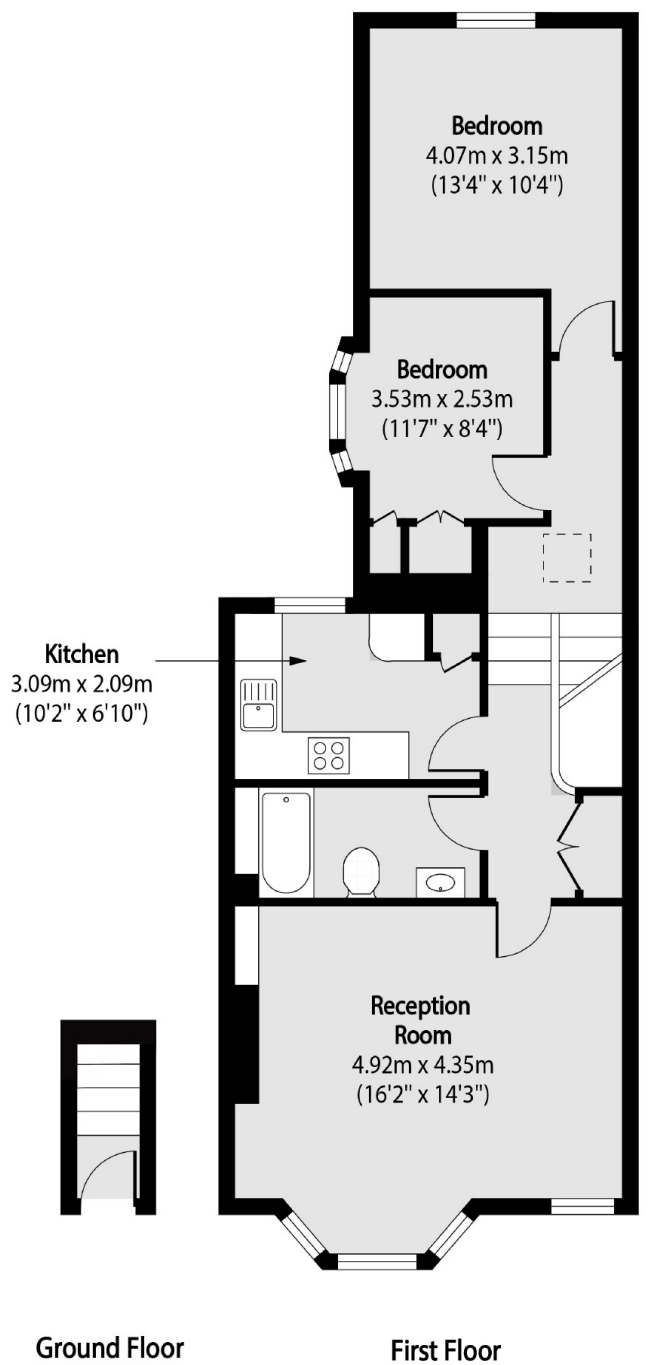
A light and spacious two double bedroom first floor flat in a Victorian conversion, with a west facing reception room. The property includes a separate fully integrated kitchen, has the potential to be extended, with a long lease, is in great condition throughout, and is located close to local amenities.

College Road is a tree-lined street that provides access to the shops, cafes, restaurants and bars on Chamberlayne Road and College Road, with the green open spaces of Queen's Park nearby. Transport links include Kensal Green (Bakerloo & Overground) and Kensal Rise (Overground).

Features

- Two Double Bedrooms
- First Floor Flat
- West Facing Reception
- Separate Kitchen
- Potential To Extend
- Close To Transport Links

College Road, London, NW10



Total area (approx): 63.06 sq m (679 sq. ft)