



## Church Road, NW10

### £225,000

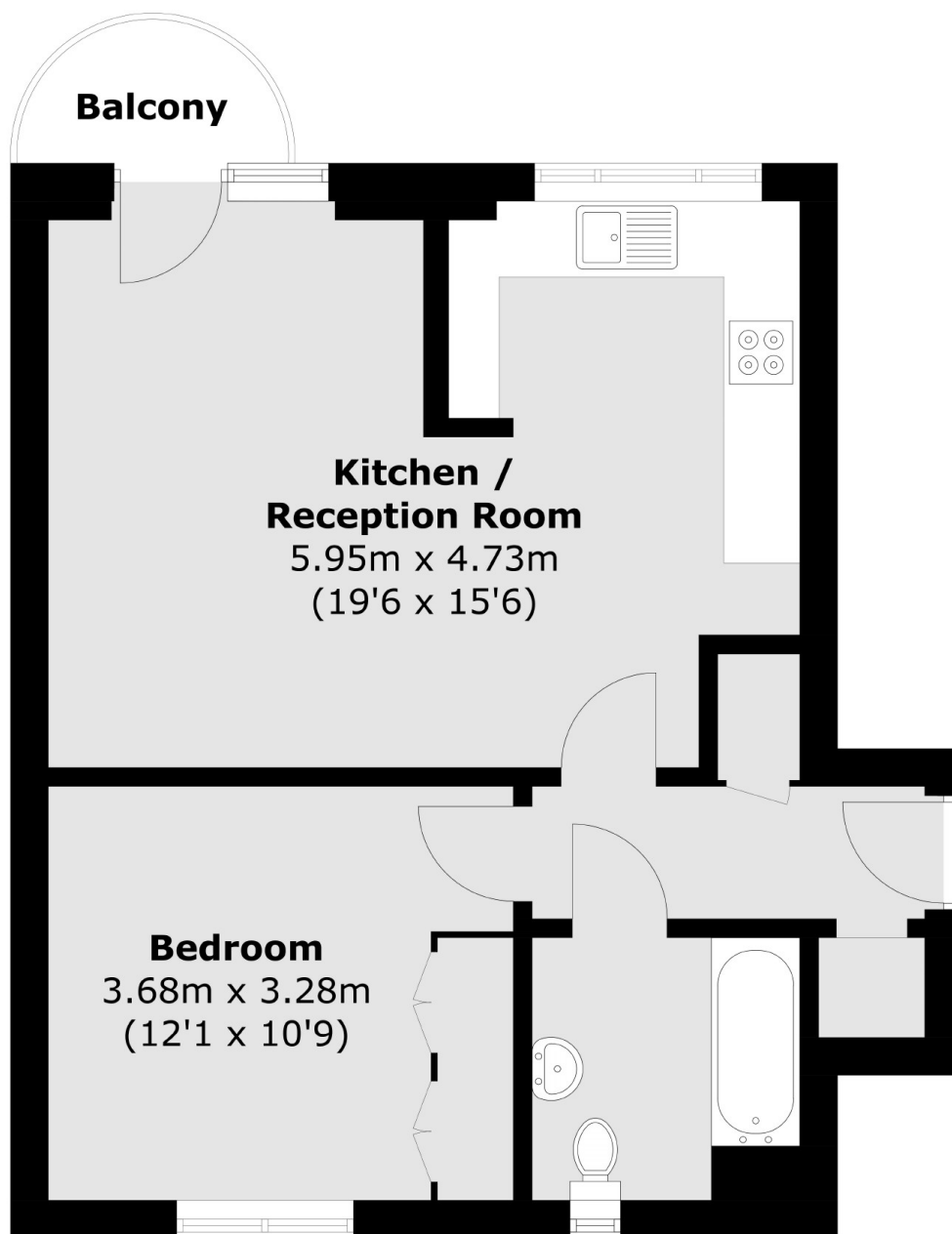
A one bedroom flat on the second floor of a secure purpose built development. The property provides a south east facing semi open plan kitchen and reception room to the front with a balcony, is in good condition throughout, and is available chain-free.

Church Road is in close proximity to the shops and amenities in Harlesden, and near to Roundwood Park. Transport links include Harlesden (Bakerloo & Overground) and Willesden Junction (Bakerloo & Overground).

### Features

- One Bedroom
- Second Floor Flat
- Semi Open Plan Kitchen
- Balcony
- Chain-Free
- Close To Local Amenities

# Church Road, London, NW10



Total area (approx.): 49.4 sq. m (531.7 sq. ft)  
Balcony: 1.9 sq. m (20.4 sq. ft)

## Dexters

Kensal Rise & Queen's Park  
62 Chamberlayne Road  
London  
NW10 3JJ  
Sales  
020 8600 3100

Energy Rating: - We aim to make our particulars both accurate and reliable. However they are not guaranteed; nor do they form part of an offer or contract. If you require clarification on any points then please contact us, especially if you're traveling some distance to view. Please note that appliances and heating systems have not been tested and therefore no warranties can be given as to their good working order.

 **RICS** Regulated  
Estate Agent  
and Letting Agent

[dexters.co.uk](https://www.dexters.co.uk)