

Willesden Lane, NW6

£250,000

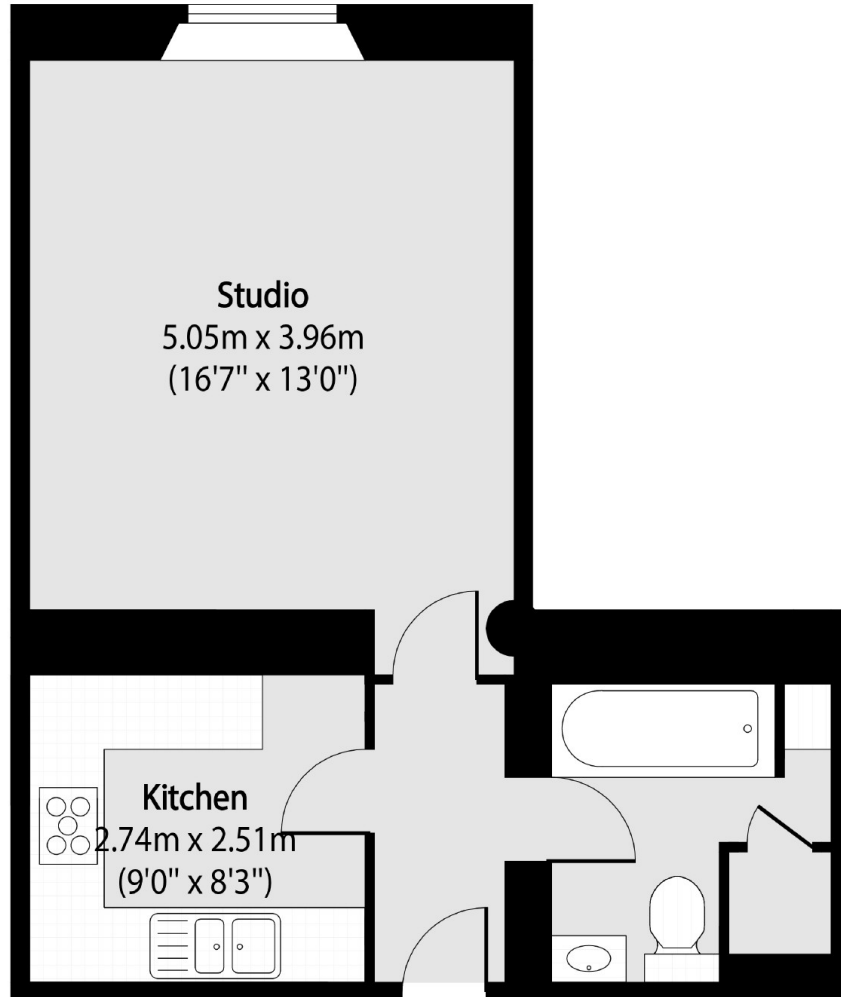
A studio flat located on the ground floor of a converted church, with allocated off-street parking and access to the communal gardens. The property benefits from having a separate kitchen, and is available chain-free.

Willesden Lane provides access to the shops, cafes, restaurants and bars on the High Road in Willesden and Salusbury Road in Queen's Park. Transport links include Brondesbury Park (Overground), Queen's Park (Bakerloo & Overground), and Willesden Green (Jubilee).

Features

- Studio Flat
- Separate Kitchen
- Communal Gardens
- Allocated Off-Street Parking
- Chain-Free
- Close To Transport Links

Willesden Lane, London, NW6



Total area (approx): 35.95 sq m (387 sq. ft)