



Kilburn Lane, W10

£542 Per week

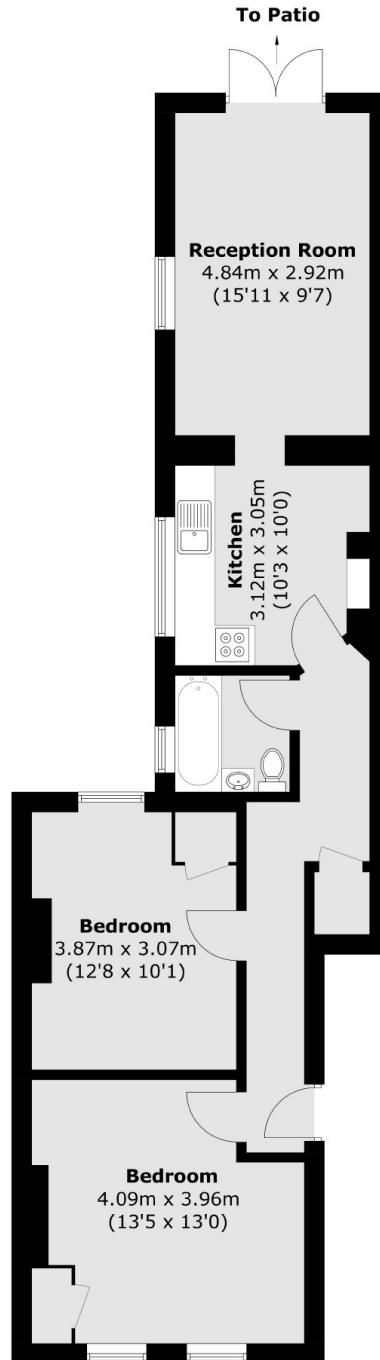
A newly refurbished ground floor two bedroom apartment with a private garden. There are two double bedrooms and a generous reception and a separate fully integrated kitchen.

The flat is conveniently situated within a short walk to Kensal Green Station and Queens Park along with a vast range of shops, cafes, transport links of Chamberlayne Road and Harrow Road.

Features

- Two Bedrooms
- Private Garden
- Newly Refurbished
- Modern
- Large Kitchen
- Wooden Floor

Kilburn Lane,
London, W10



Total area (approx.): 65.5 sq. m (705.0 sq. ft)