



## St. Thomas's Road, NW10

### £335,000

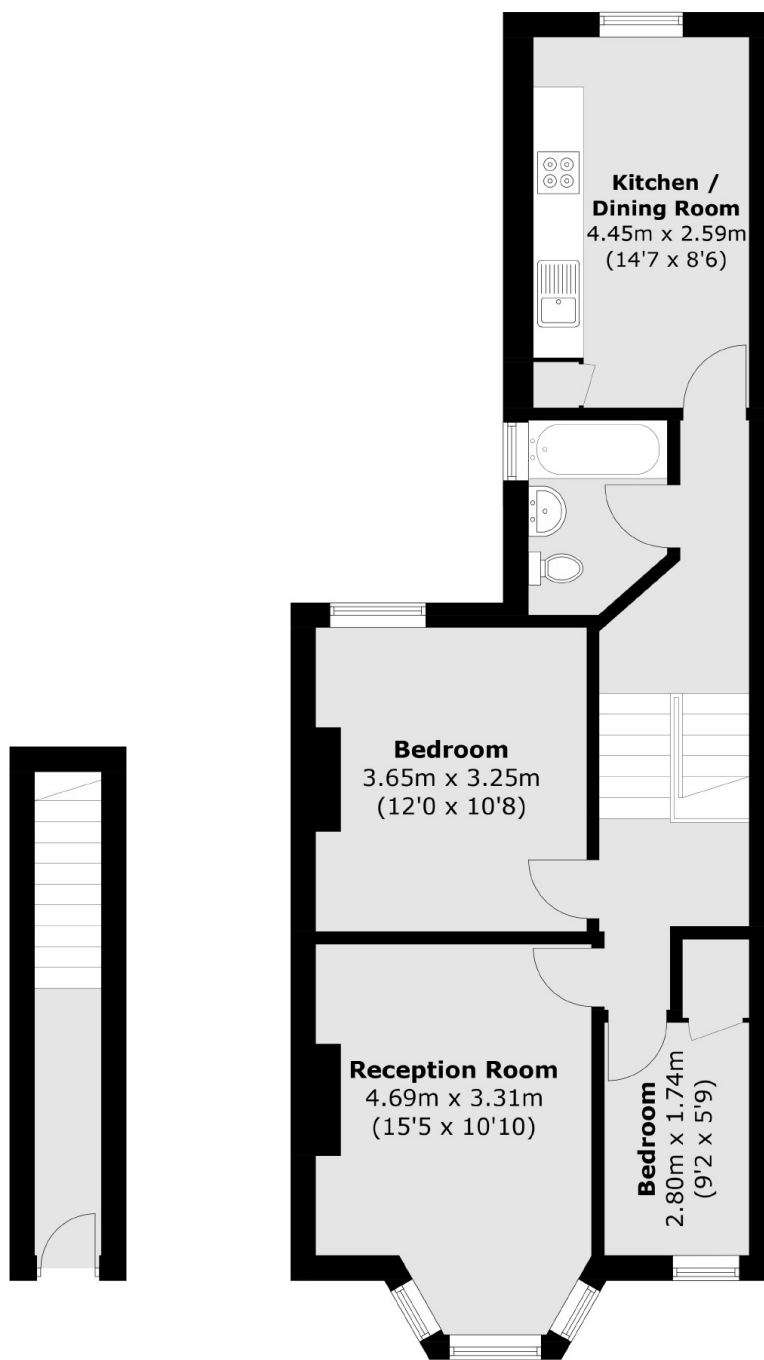
A light and spacious two bedroom flat on the first floor of a mid terraced Victorian conversion. The property has a large eat-in kitchen to the rear, has the potential to be extended, has a long lease, and is available chain-free.

St. Thomas's Road is a tree-lined residential street in close proximity to the shops and amenities in Harlesden, and Roundwood Park. Transport links include Harlesden (Bakerloo & Overground) and Willesden Junction (Bakerloo & Overground).

### Features

- Two Bedroom
- First Floor Flat
- Separate Eat-In Kitchen
- Potential To Extend
- Chain-Free
- Close To Local Amenities

# St. Thomas's Road, London, NW10



**Ground Floor**

**First Floor**

Total area (approx.): 64.2 sq. m (691.1 sq. ft)