



## Ambleside Road, NW10

### £750,000

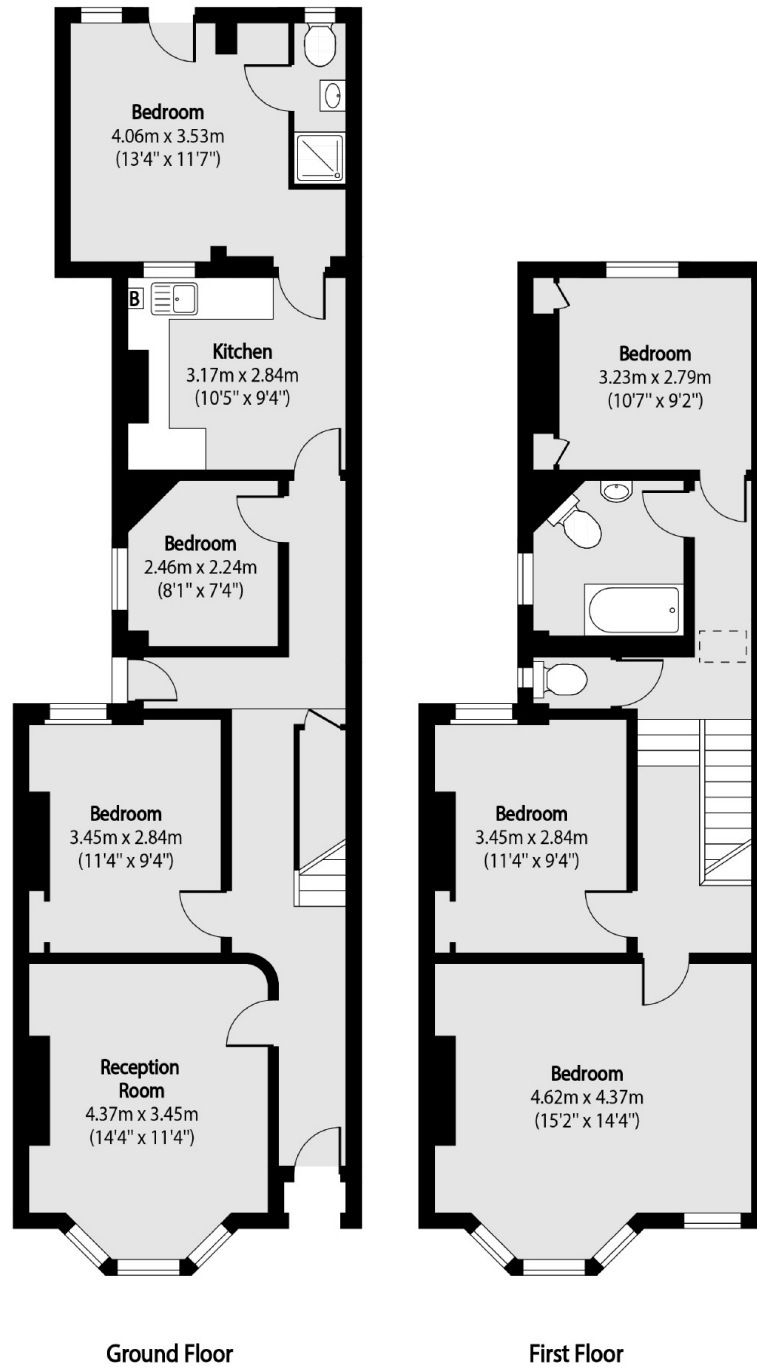
A spacious five bedroom Victorian terraced house, arranged over two floors, with two bathrooms and a WC, and a south facing garden. The property has the potential to be extended and is available chain-free.

Ambleside Road is tree-lined residential street in close proximity to the shops and amenities in Harlesden, and next to Roundwood Park. Transport links include Harlesden (Bakerloo & Overground) and Willesden Junction (Bakerloo & Overground).

### Features

- Freehold
- Five Bedrooms
- Two Bathrooms & WC
- Potential To Extend
- Chain-Free
- Close To Roundwood Park

# Ambleside Road, London, NW10



Total area (approx): 125.05 sq m (1346 sq. ft)