



Banister Road, W10

£599,950

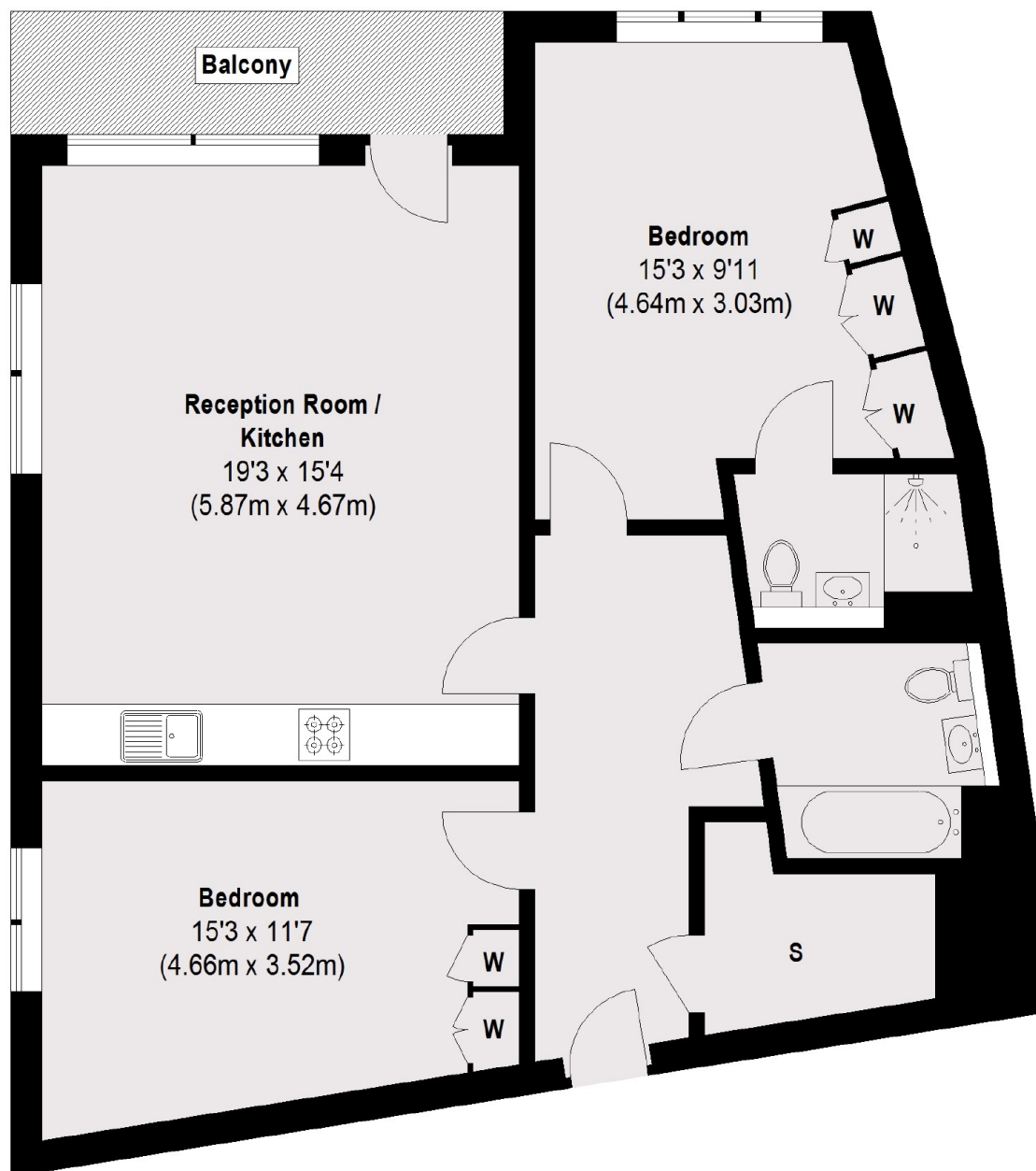
A light and spacious two double bedroom flat in a secure modern block, with lift access, a communal roof garden, and panoramic views of the London skyline. The property benefits from having a fully integrated kitchen, private balcony, and built-in storage throughout.

Prime House is ideally located close to the shops, cafes, bars and restaurants in Kensal Rise and Queen's Park. Transport links include Kensal Rise (Overground), Kensal Green (Bakerloo Overground) and Queen's Park (Bakerloo and Overground).

Features

- Two Double Bedrooms
- Two Bathrooms
- Private Balcony
- Communal Roof Garden
- Lift
- Close To Local Amenities

Banister Road, London, W10



Fourth Floor

Total area (approx.): 82.16 sq. m (884 Sq. ft)
Balcony: 5.76 sq. m (62 Sq. ft)