



Keslake Road, NW6

£799,999

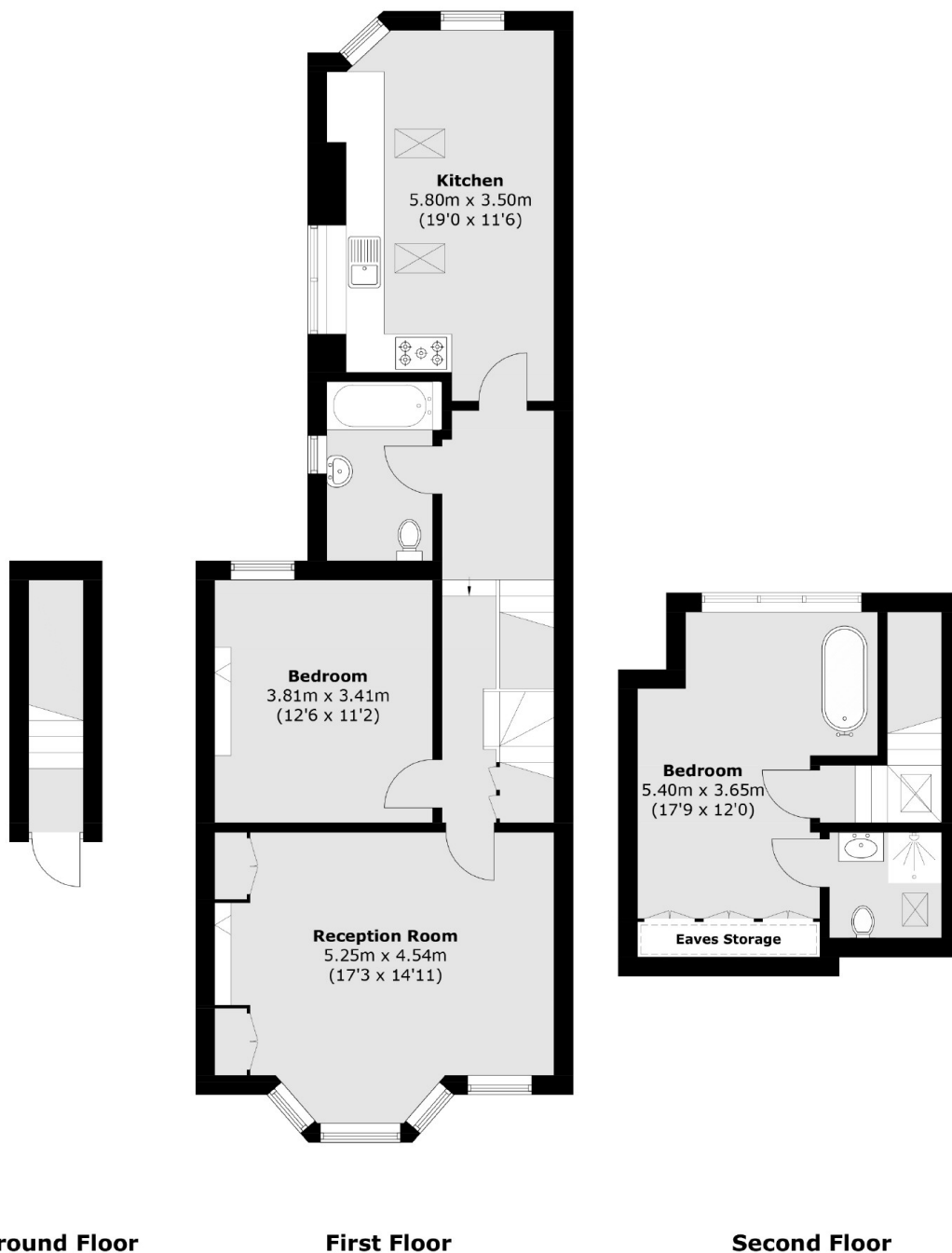
A spacious and beautifully presented two double bedroom flat, configured over the first and second floors of a popular red brick Victorian conversion, in the sought-after location of Queen's Park. The property has recently been fully renovated, boasts original features, flooded with natural light throughout, and is available chain-free.

Keslake Road is a residential tree-lined street located next to the green open spaces of Queen's Park, with access to the shops, cafes, bars and restaurants on Chamberlayne Road and Salusbury Road. Transport links include Kensal Rise (Overground) and Queen's Park (Bakerloo & Overground).

Features

- Two Double Bedrooms
- Two Bathrooms
- Split-Level
- Full Freehold
- Large South Facing Reception
- Close To Local Amenities

Keslake Road, London, NW6



Total area (approx.): 98.4 sq. m (1,059.1 sq. ft)
(Excluding Eaves Storage)