



Hawthorn Road, NW10

£475,000

A light and spacious two double bedroom first floor flat in an Edwardian conversion, with a private garden. The property benefits from having a large reception room to the front with a bay window and high ceilings, a separate fully integrated modern kitchen to the rear, and is available chain-free.

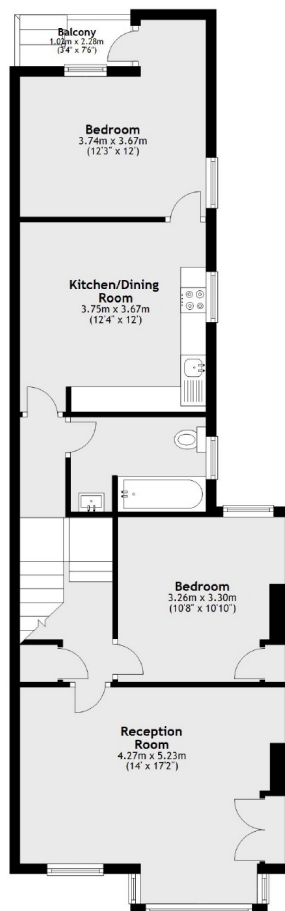
Hawthorn Road is located next to Roundwood Park, nestled between Kensal Rise and Willesden Green. Transport links include Willesden Green (Jubilee), Willesden Junction (Bakerloo & Overground), along with multiple bus routes.

Features

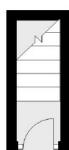
- Two Double Bedrooms
- First Floor Flat
- Separate Eat-In Kitchen
- Private Garden
- Chain-Free
- Close To Local Amenities

Hawthorn Road, London, NW10

First Floor



Ground Floor



Main area: Approx. 73.0 sq. metres (785.9 sq. feet)
Plus balconies, approx. 2.3 sq. metres (25.0 sq. feet)