



Wrotesley Road, NW10

£692 Per week

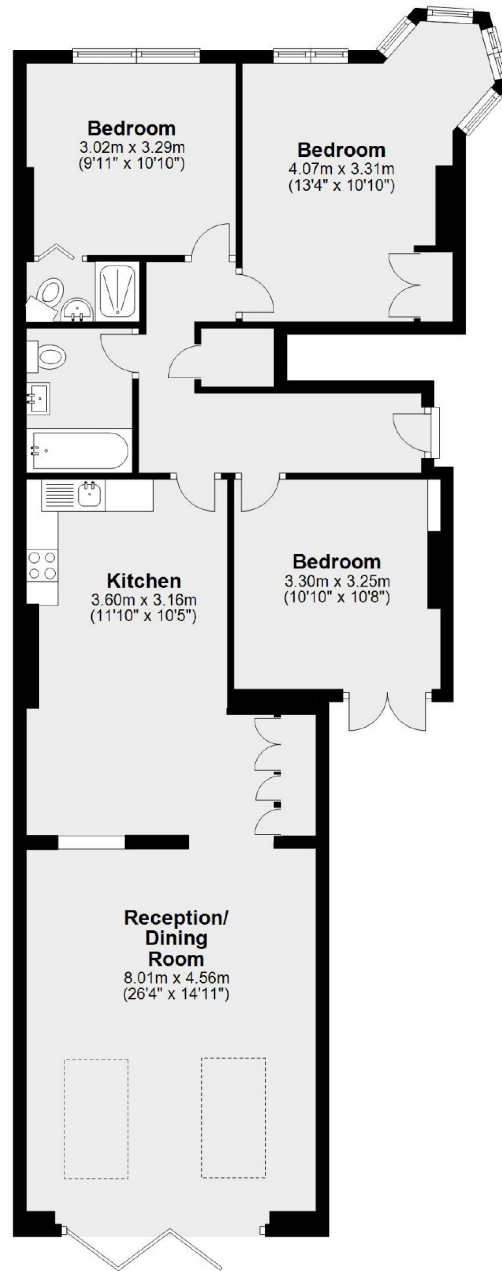
A stunning three double bedroom ground floor garden flat. The property has wooden floors, a modern bathroom plus an en suite, and a spacious reception with large windows and patio doors leading to the private garden.

Wrotesley Road is close to the shops and cafes along College Road and Chamberlayne Road and has good transport links into Central London.

Features

- Ground Floor
- Three Bedrooms
- Large Reception
- Modern Bathroom
- Separate Kitchen
- Private Garden

Wrotesley Road,
London, NW10



Total area: approx. 101.2 sq. metres (1089.2 sq. feet)