



Crownhill Road, NW10

£535,000

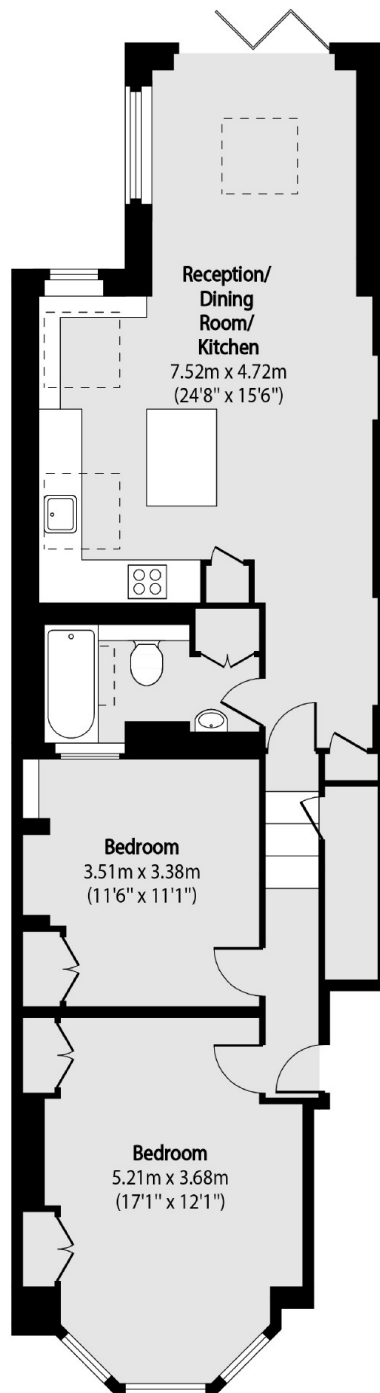
A light and spacious beautifully presented two double bedroom flat in a Victorian conversion, with a private garden. The property benefits from having a large open plan fully integrated kitchen and reception room to the rear, built-in storage throughout, and is available chain-free.

Crownhill Road is ideally located next to Roundwood Park, and is in close proximity to Harlesden High Street and Willesden, with access to shops, cafes and restaurants. Transport links include Willesden Junction (Bakerloo & Overground) and Harlesden (Bakerloo & Overground), along with multiple bus routes.

Features

- Two Double Bedrooms
- Fully Extended Garden Flat
- Open Plan Kitchen & Reception
- Chain-free
- Long Leasehold
- Close To Local Amenities

Crownhill Road, London, NW10



Total area (approx): 77.48 sq m (834 sq. ft)