

Salisbury Road, NW6

£475,000

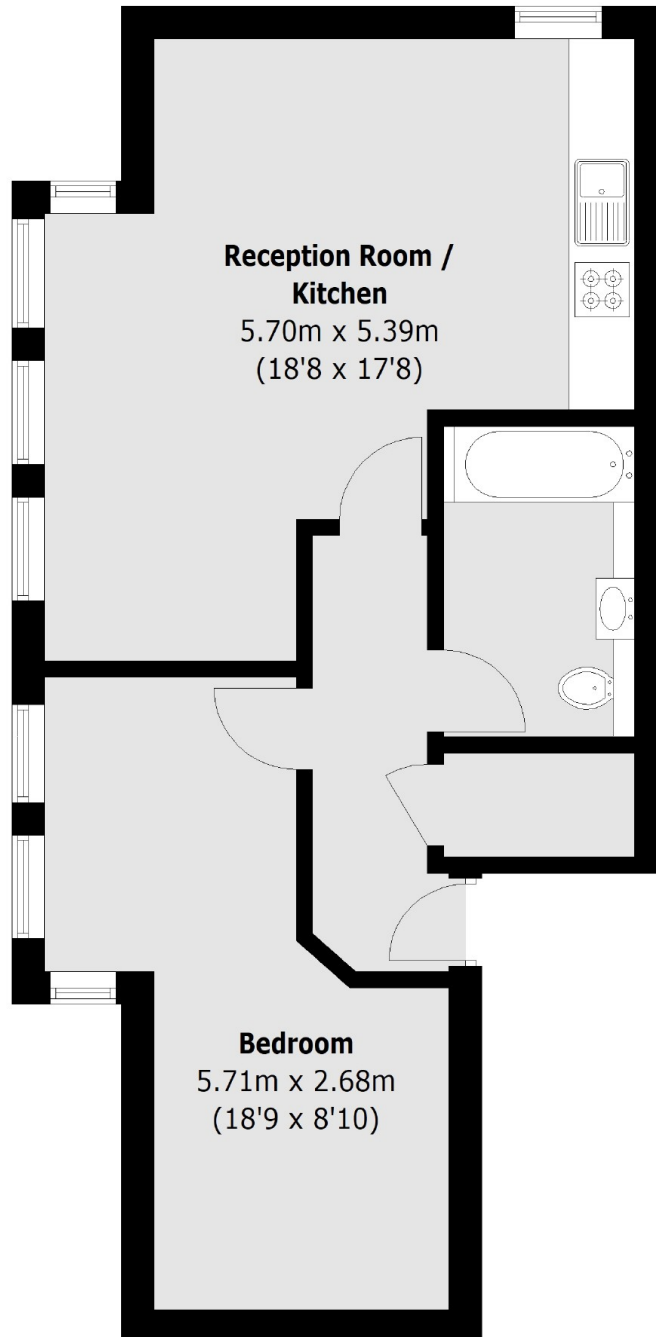
A light and spacious one bedroom flat located on the top floor of a securely gated modern development, with lift access. The property benefits from having an open plan kitchen and reception room, allocated parking, in good condition throughout, and is available chain-free.

Quantic House is a development located off Salisbury Road, and in close proximity to the shops, cafes and amenities on Salisbury Road, and the green open spaces of Queen's Park. Transport links include Queen's Park (Bakerloo & Overground), Brondesbury Park (Overground), and Kilburn High Road (Overground).

Features

- One Bedroom
- Light & Spacious
- Secure Modern Development
- Allocated Parking
- Chain-Free
- Prime Location

Salisbury Road, London, NW6



Total area (approx.): 51.28 sq. m (552.0 Sq. ft)