



Sellons Avenue, NW10

£725,000

A beautifully presented three double bedroom flat arranged over two floors in a Victorian conversion, with a west facing roof terrace. The property benefits from having a large reception room occupying the bay window, a semi separate fully integrated kitchen, and is available chain-free.

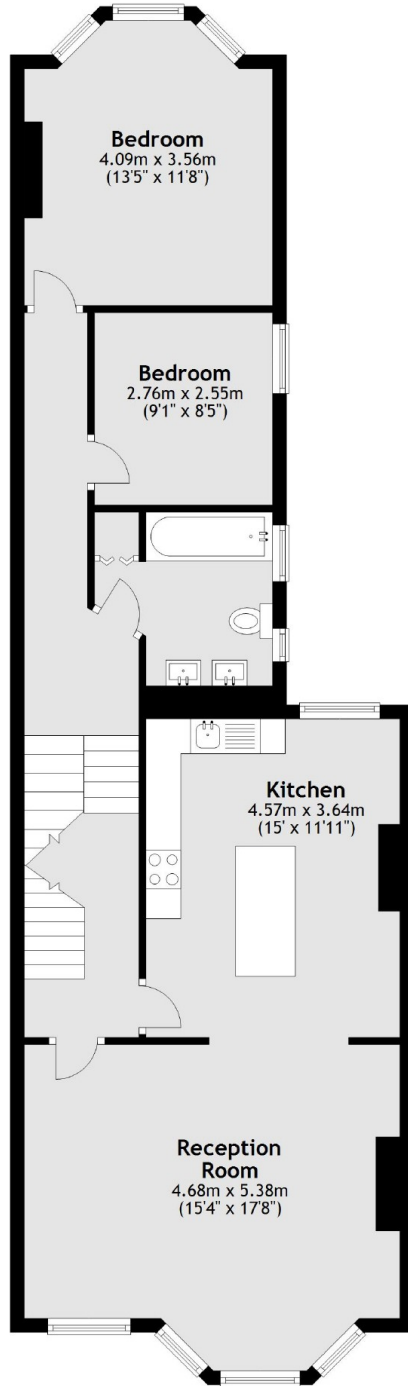
Sellons Avenue is ideally located next to Roundwood Park, and is in close proximity to Harlesden High Street and Willesden, with access to shops, cafes and restaurants. Transport links include Willesden Junction (Bakerloo & Overground) and Harlesden (Bakerloo), along with multiple bus routes.

Features

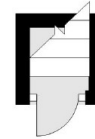
- Three Double Bedrooms
- First Floor Flat
- Split-Level
- West Facing Roof Terrace
- Chain-Free
- Close To Local Amenities

Sellons Avenue, London, NW10

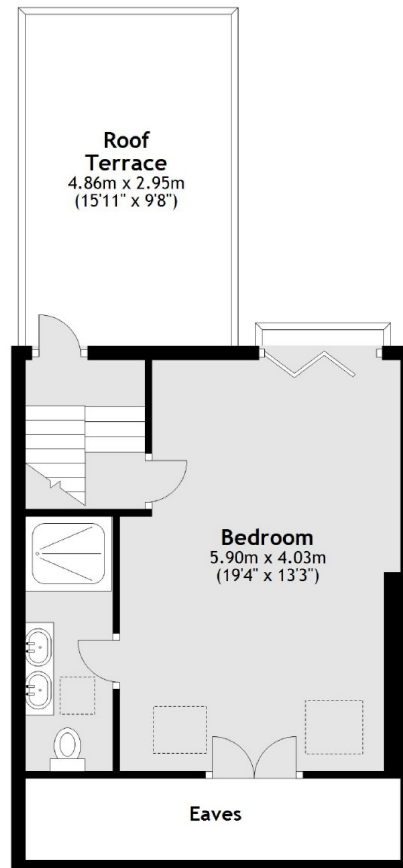
First Floor



Ground Floor



Second Floor



Total area: approx. 114.9 sq. metres (1236.4 sq. feet)