



**Lushington Road, NW10**

**£1,799,999**

**Dexters**



## Lushington Road, NW10

A unique five bedroom Edwardian family home, that has been fully extended and elegantly refurbished throughout, arranged over three floors and located on a quiet residential tree-lined street close to local amenities.

Upon entering the property, you are greeted with a spacious double reception room and high ceilings, with the rear of the property hosting an impressive eat-in kitchen, combined with a dining and lounge area, flooded with light. Access to the large landscaped garden is through the bespoke Crittall glass doors, with a raised decked entertaining space nestled to the rear. The ground floor also benefits from a utility room, WC, and built-in storage.

The first floor offers three well proportioned bedrooms and a family bathroom, with the larger of the three to the front of the property, including a spectacular en-suite bathroom. Two further bedrooms are located on the top floor, along with a shower room, storage, and under eave storage to the front and rear of the building.

### Features

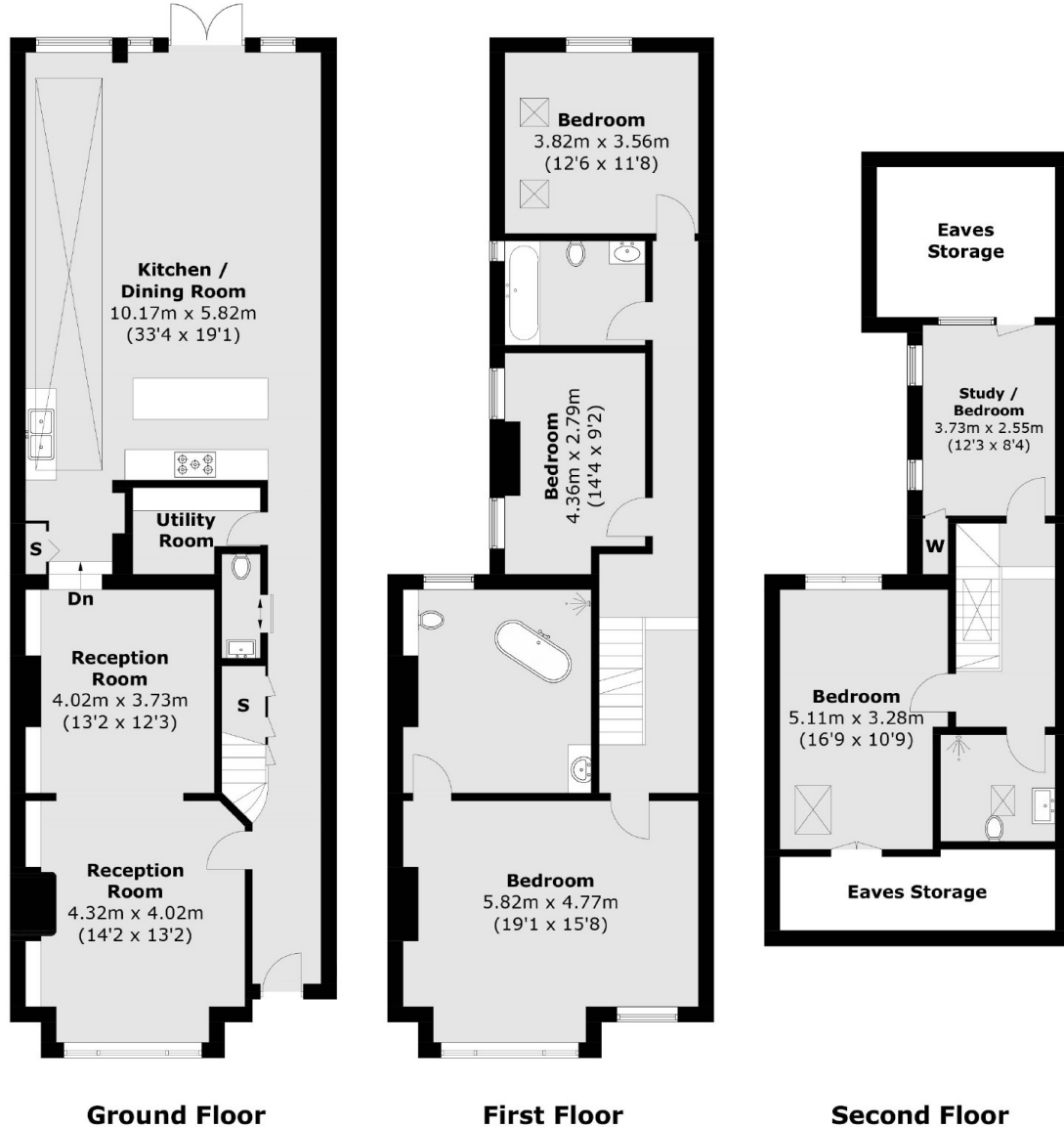
- Freehold
- Five Bedrooms
- Double Reception Room
- Eat-In Kitchen & Lounge
- Private Garden
- Chain-Free







# Lushington Road, London, NW10



Total area (approx.): 240.9 sq. m (2,592.9 sq. ft)  
(Excluding Eaves Storage)