



Ilbert Street, W10

£475,000

A spacious three bedroom second floor flat in a secure purpose built block, flooded with natural light. The property benefits from having a south east facing balcony, a large separate kitchen, ample storage throughout, and in a sought-after location.

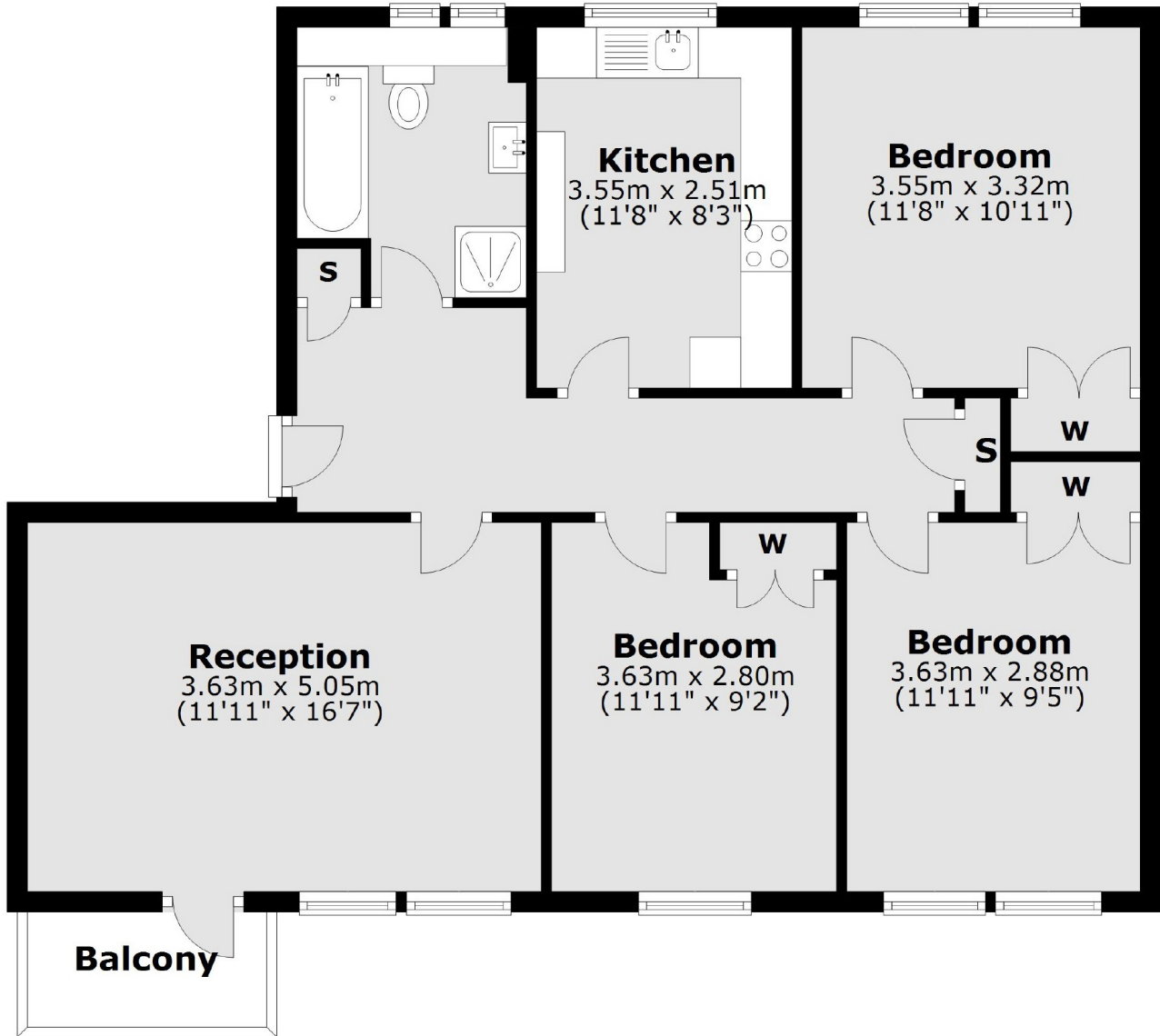
Queens Park Court is located in a quiet residential area next to Queens Park Conservation Area, with access to the shops, cafes, restaurants and bars on Chamberlayne Road. Transport links include Kensal Rise (Overground) and Kensal Green (Bakerloo & Overground).

Features

- Three Bedrooms
- South East Facing Balcony
- Separate Kitchen
- Off-Street Parking
- Ample Storage
- Great Location

Ilbert Street,
London, W10

Second Floor



Main area: Approx. 80.2 sq. metres (863.4 sq. feet)
Plus balconies, approx. 2.9 sq. metres (31.2 sq. feet)

Dexters

Kensal Rise & Queen's Park
62 Chamberlayne Road
London
NW10 3JJ
Sales
020 8600 3100

Energy Rating: C. We aim to make our particulars both accurate and reliable. However they are not guaranteed; nor do they form part of an offer or contract. If you require clarification on any points then please contact us, especially if you're traveling some distance to view. Please note that appliances and heating systems have not been tested and therefore no warranties can be given as to their good working order.

 **RICS** Regulated
Estate Agent
and Letting Agent

dexters.co.uk