



## Banister Road, W10

£575,000

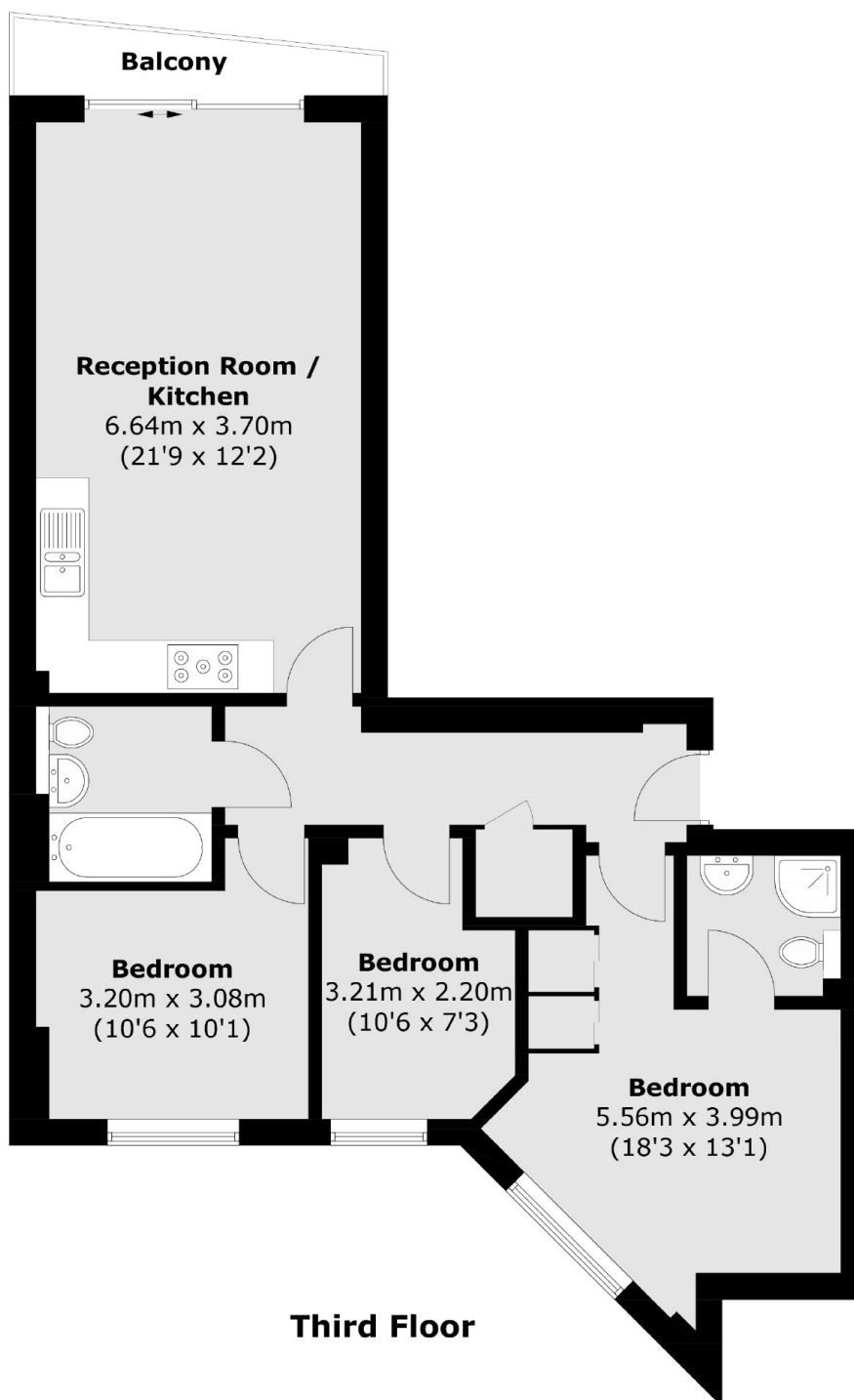
A spacious three bedroom flat in a secure newer development, with a south facing balcony and communal roof terrace. The property benefits from having a large open plan kitchen and reception, family bathroom and en suite, lift access, allocated parking, and is available chain-free.

Banister Road is ideally located close to the shops, cafes, restaurants and bars in Kensal Rise and Queen's Park. Transport links include Kensal Rise (Overground), Kensal Green (Bakerloo Overground) and Queen's Park (Bakerloo and Overground).

### Features

- Three Bedrooms
- Open Plan Kitchen & Reception
- South West Facing Balcony
- Communal Roof Terrace
- Allocated Parking
- Chain-Free

# Banister Road, London, W10



Total area (approx.): 70.5 sq. m (758.8 sq. ft)  
Balcony (approx.) : 2.8 sq. m (30.1 sq. ft)