



Herbert Gardens, NW10

£625,000

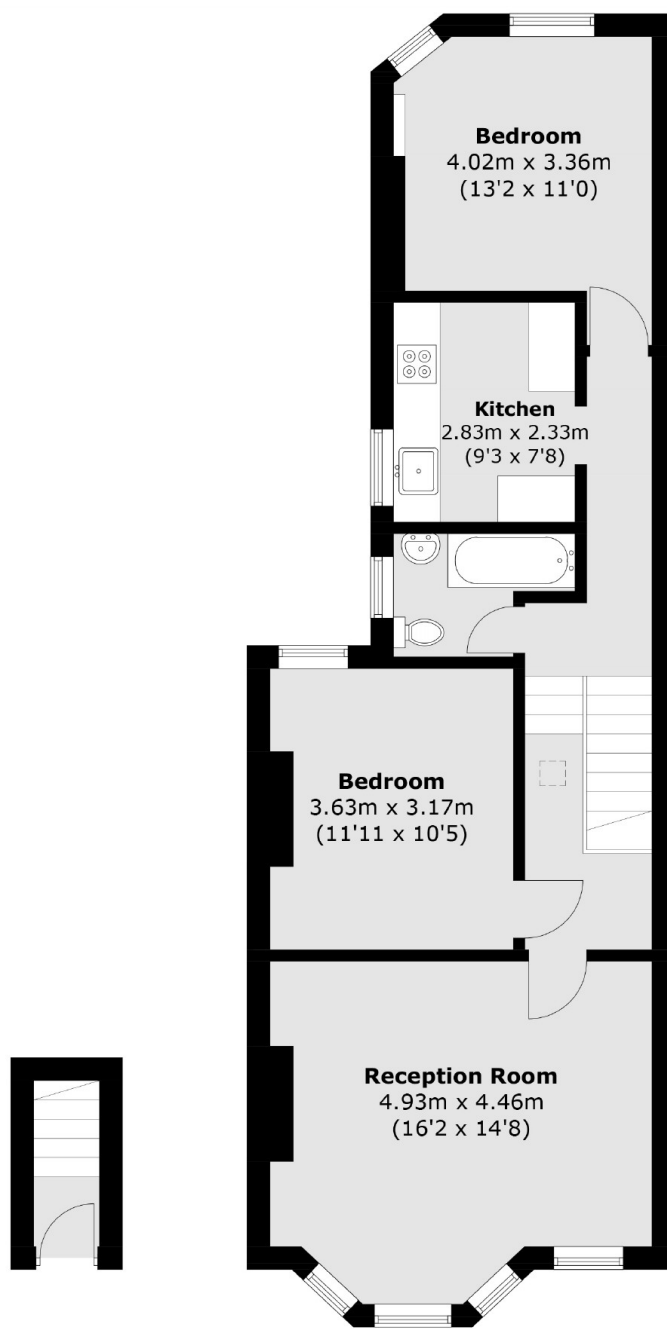
Set within a Victorian conversion is this two double bedroom split level first floor flat, with a south facing reception room. The property benefits from having a separate kitchen, a share in the freehold, has the added bonus of the loft being demised with the potential to be extended, and can be available chain-free.

Herbert Gardens is a residential street located close to the shops, cafes and amenities on Chamberlayne Road, and in close proximity to the green open spaces of Queen's Park. Transport links include Kensal Rise (Overground), Kensal Green (Bakerloo & Overground), Willesden Junction (Bakerloo & Overground) and the newly developed Old Oak Common station.

Features

- Two Double Bedrooms
- Separate Kitchen
- South Facing Reception
- Loft Demised
- Share Of Freehold
- Close To Local Amenities

Herbert Gardens, London, NW10



Ground Floor

First Floor

Total area (approx.): 67.8 sq. m (729.7 sq. ft)

Dexters

Kensal Rise & Queen's Park
62 Chamberlayne Road
London
NW10 3JJ

Sales
020 8600 3100

Energy Rating: C. We aim to make our particulars both accurate and reliable. However they are not guaranteed; nor do they form part of an offer or contract. If you require clarification on any points then please contact us, especially if you're traveling some distance to view. Please note that appliances and heating systems have not been tested and therefore no warranties can be given as to their good working order.

 **RICS** | Regulated
Estate Agent
and Letting Agent

dexters.co.uk