



Pember Road, NW10

£620,000

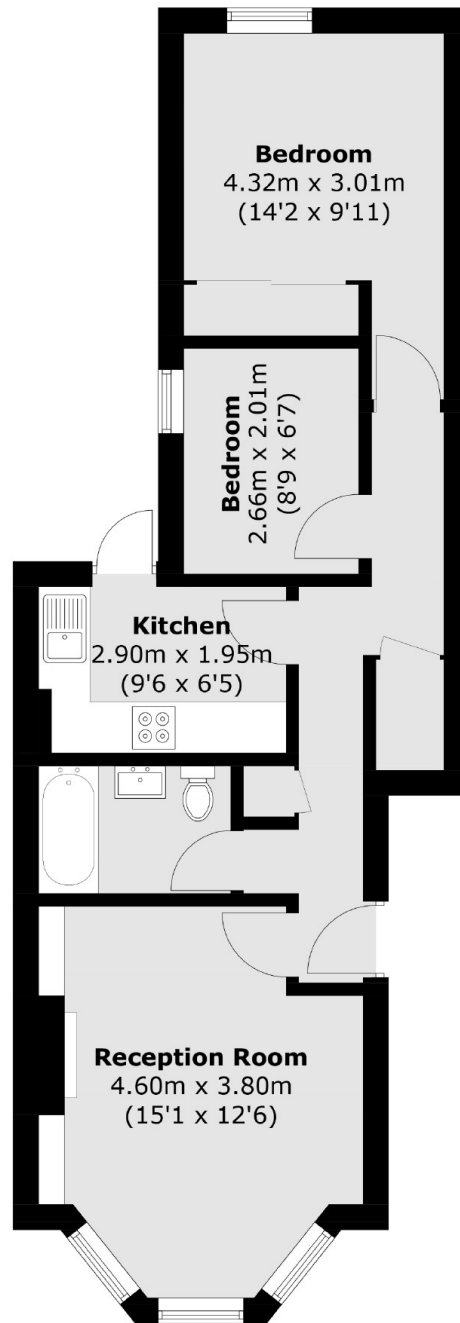
Set within a mid terraced Victorian conversion is this two bedroom garden flat in immaculate condition throughout. Flooded with natural light the property has a fully integrated separate kitchen, has the potential to be extended, and is located in prime Kensal Rise.

Pember Road is a quiet residential street with access to the shops, cafes, bars and restaurants on Chamberlayne Road, and Salusbury Road in Queen's Park, and in close proximity to Notting Hill. Transport links include Kensal Rise (Overground) and Kensal Green (Bakerloo & Overground).

Features

- Two Bedrooms
- Garden Flat
- Separate Kitchen
- Excellent Condition
- Potential To Extend
- Close To Local Amenities

Pember Road, London, NW10



Total area (approx.): 52.0 sq. m (559.7 sq. ft)