



## Allington Road, W10

### £450,000

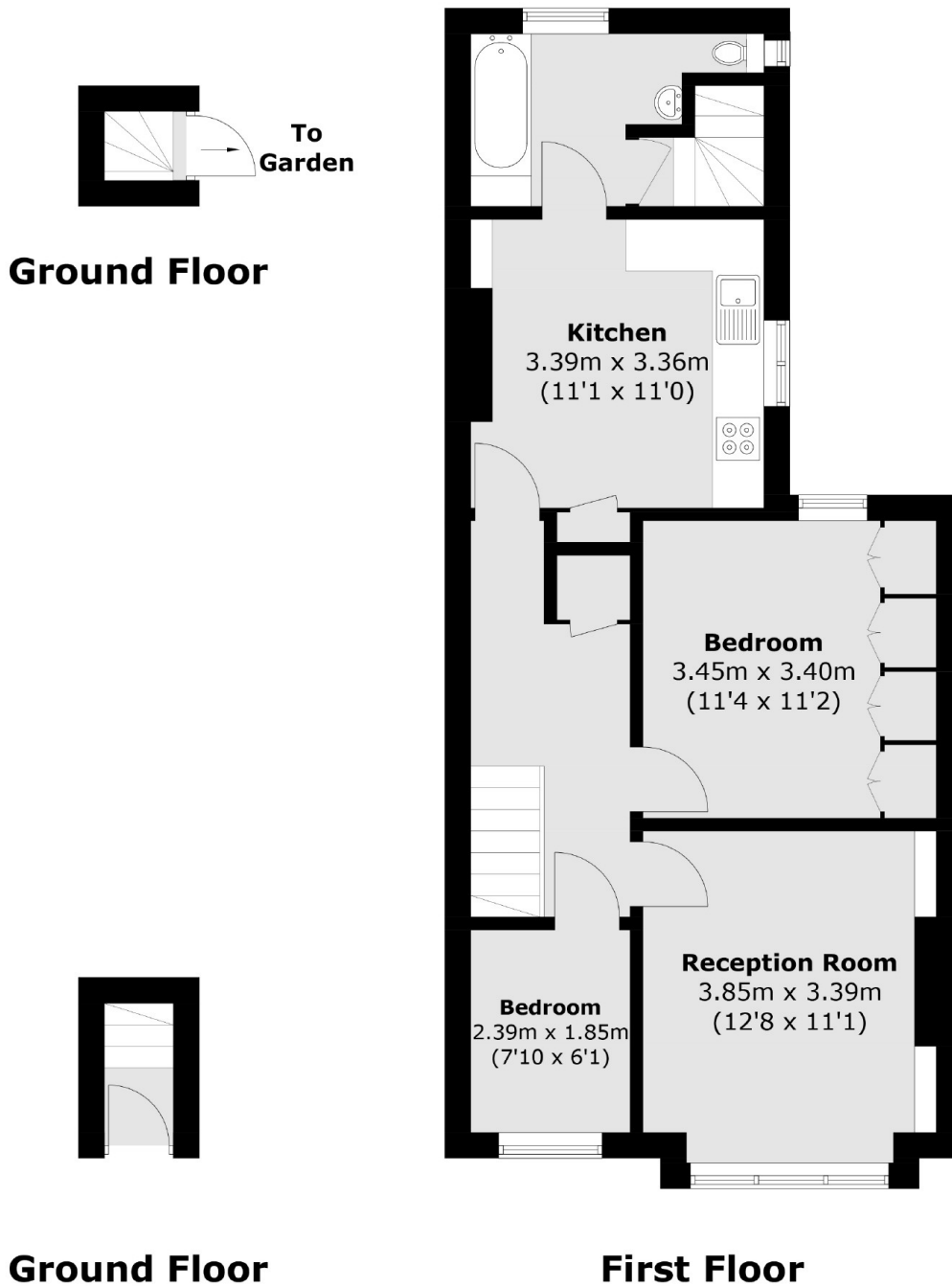
A spacious two bedroom first floor flat with its own entrance in a period build, with direct access to a rear garden. The property benefits from having an eat-in kitchen, has recently been refurbished throughout, has built-in storage, and is available chain-free.

Allington Road is within close proximity to local shops, cafes, restaurants and bars on Chamberlayne Road, and Salusbury Road in Queen's Park. Transport links include Queen's Park (Bakerloo & Overground), Kensal Rise (Overground) and Kensal Green (Bakerloo & Overground).

### Features

- Two Bedrooms
- First Floor Flat
- Shared Garden
- Chain-Free
- Long Leasehold
- Close To Local Amenities

# Allington Road, London, W10



Total area (approx.): 60.5 sq. m (651.2 sq. ft)