

## Harlesden Gardens, NW10

### £350,000

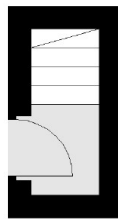
A beautifully presented two bedroom top floor flat flooded with natural light, which is available chain-free. The property benefits from having a spacious open plan kitchen and reception room to the rear, two equalling sized bedrooms, and has recently been renovated throughout.

Harlesden Gardens is a tree-lined street near to Roundwood Park, and in close proximity to Harlesden High Street and Willesden, with access to shops, cafes, bars and restaurants. Transport links include Willesden Junction (Bakerloo & Overground) and Harlesden (Bakerloo) along with multiple bus routes.

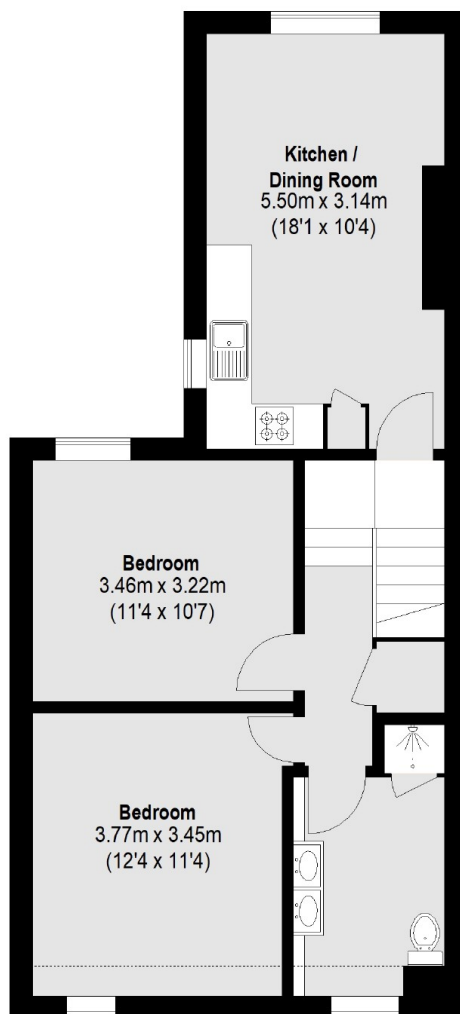
### Features

- Two Double Bedrooms
- Open Plan Kitchen & Reception
- Excellent Condition
- Share Of Freehold
- Chain-Free
- Close To Local Amenities

# Harlesden Gardens, London, NW10



Ground Floor



First Floor

Total area (approx.): 58.64 sq. m (631 Sq. ft)