



Harrow Road, NW10

£800,000

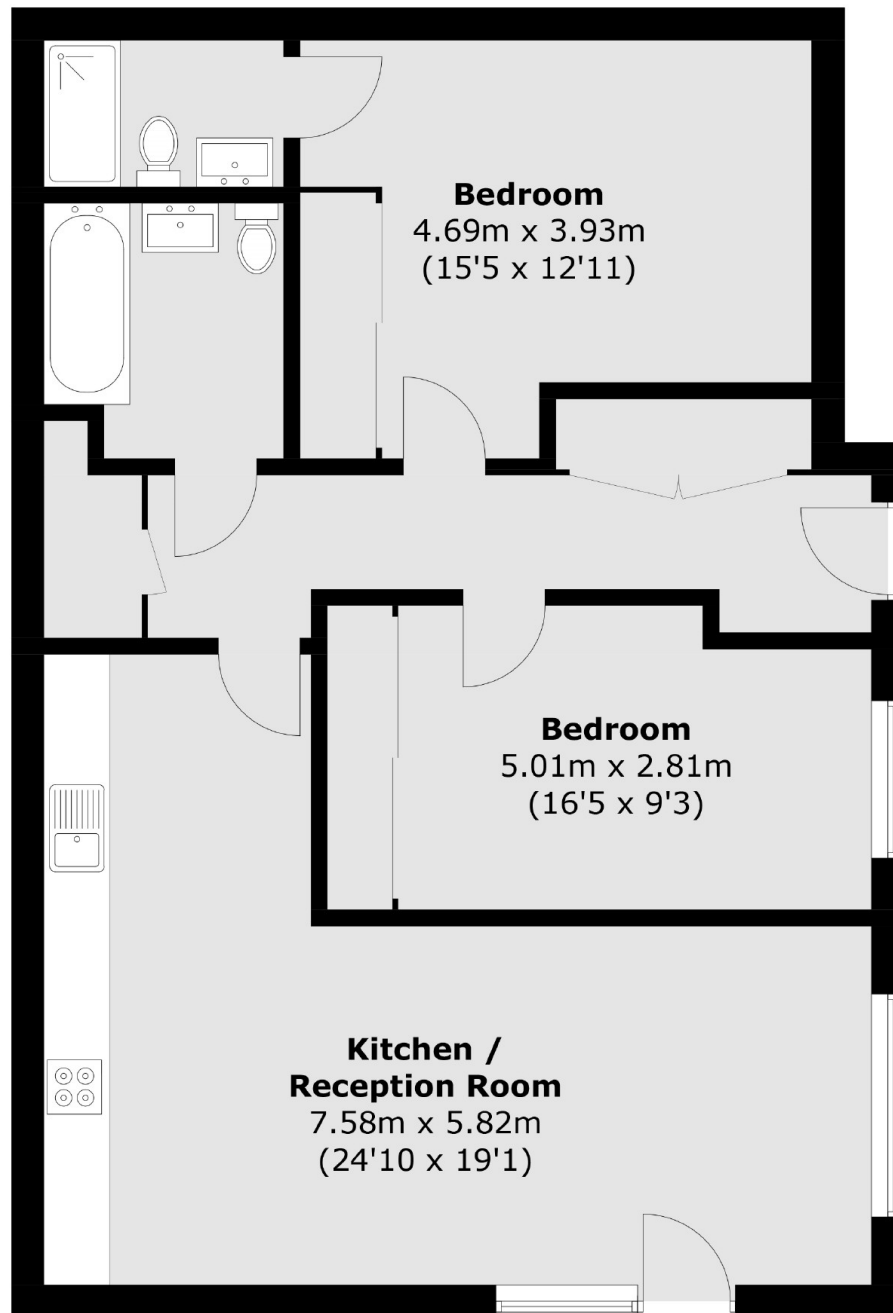
A spacious two double bedroom ground floor flat with a wrap-around garden, set within a securely gated modern development with two off-street parking spaces. The property provides a large open plan kitchen and reception room, has built-in storage, and is available chain-free.

Harrow Road provides access to the cafes, shops, restaurants and bars on Chamberlayne Road, and in close proximity to Queen's Park and Notting Hill. Transport links include Kensal Green (Overground & Bakerloo), Kensal Rise (Overground) and multiple bus routes.

Features

- Two Double Bedrooms
- Two Bathrooms
- Own Entrance
- Garden Flat
- Off-Street Private Parking
- Chain-Free

Harrow Road, London, NW10



Total area (approx.): 85.1 sq. m (916.0 sq. ft)