



Ravensworth Road, NW10

£460,000

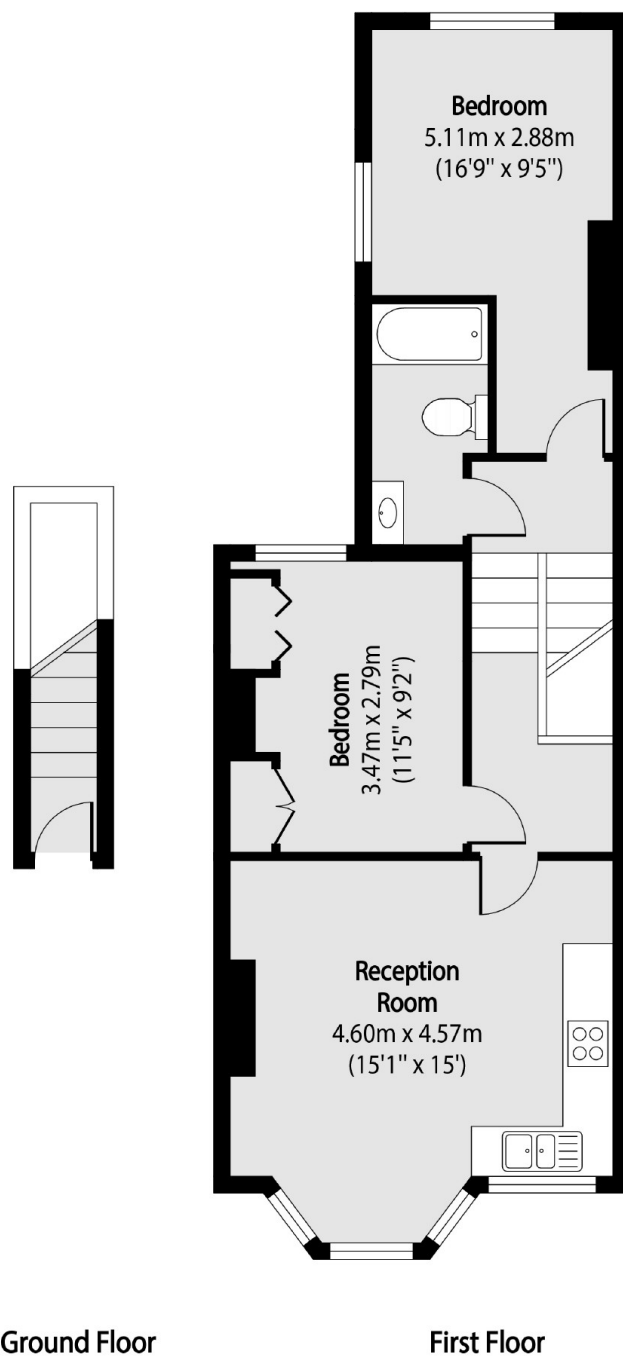
Set in a Victorian conversion is this two double bedroom first floor flat, with an open plan kitchen and reception room to the front occupying the bay window. The property has the potential to be extended, is available chain-free, and has a share in the freehold.

Ravensworth Road is a one-way residential street located close to the shops, cafes, and amenities on College Road and Chamberlayne Road, with the green open spaces of Queen's Park nearby. Transport links include Kensal Green (Bakerloo & Overground) and Kensal Rise (Overground) and multiple bus routes.

Features

- Two Double Bedrooms
- First Floor Flat
- Potential To Extend
- Share Of Freehold
- Chain-Free
- Close To Transport Links

Ravensworth Road, London, NW10



Ground Floor

First Floor

Total area (approx): 55.96 sq m (602 sq. ft)