



College Road, NW10

£640,000

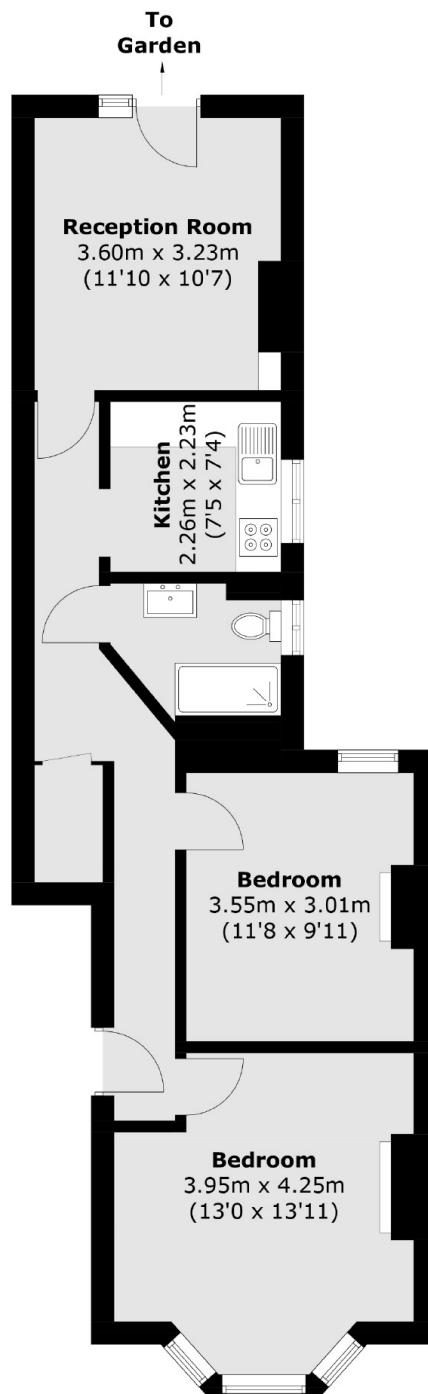
Set within a mid terraced Victorian conversion is this two double bedroom garden flat. The property is available chain-free, has a number of the original features retained, has a separate kitchen, comes with a share in the freehold, and has the potential to be extended.

College Road is a tree-lined street that provides access to the shops, cafes, restaurants and bars on Chamberlayne Road and College Road, with Queen's Park nearby. Transport links include Kensal Green (Bakerloo & Overground) and Kensal Rise (Overground).

Features

- Two Double Bedrooms
- Garden Flat
- Separate Kitchen
- Potential To Extend
- Chain-Free
- Close To Transport Links

College Road, London, NW10



Total area (approx.): 59.8sq. m (643.7 sq. ft)