



## Ashburnham Road, NW10

### £600,000

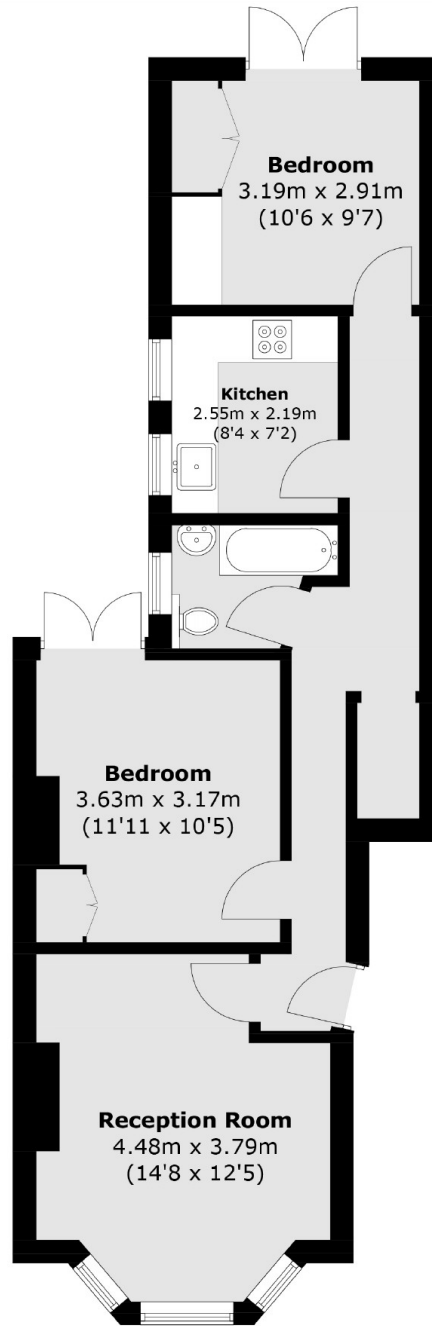
A spacious two double bedroom garden flat in a Victorian terraced house, with a south facing reception room. The property benefits from having a separate kitchen, built-in storage, has planning permission granted for a side and rear extension, and is in good condition throughout.

Ashburnham Road is a quiet tree-lined residential street, conveniently located within the catchment area of Princess Frederica School, and close to the shops, restaurants and bars on Chamberlayne Road and College Road. Transport links include Kensal Rise (Overground) and Kensal Green (Bakerloo line & Overground).

### Features

- Two Double bedrooms
- Garden Flat
- South Facing Reception
- Separate Kitchen
- Planning Permission Granted
- Prime Location

# Ashburnham Road, London, NW10



## Ground Floor

Total area (approx.): 57.6 sq. m (620.0 sq. ft)