



Wembley Park Drive, HA9

£519 Per week

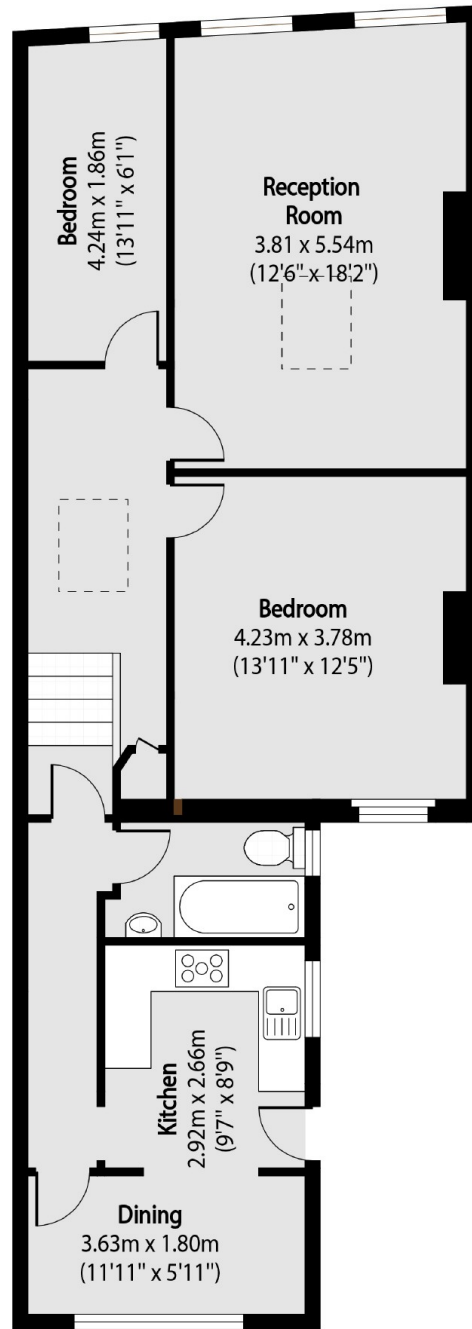
A spacious two bedroom apartment set on the first floor in an enviable location. There is also a kitchen/dining area, a generous separate reception and a shared garden.

Wembley park drive is conveniently located for local transport with Wembley Park tube station being less than 0.1 miles away. As well as being opposite Stadium Retail Park.

Features

- Two Bedrooms
- Spacious
- First Floor
- Shared Garden
- Eat in Kitchen
- Separate Reception

Wembley Park Drive, Wembley, HA9



Total area (approx): 80.88 sq m (871 sq. ft)