



## Holland Road, NW10

£675,000

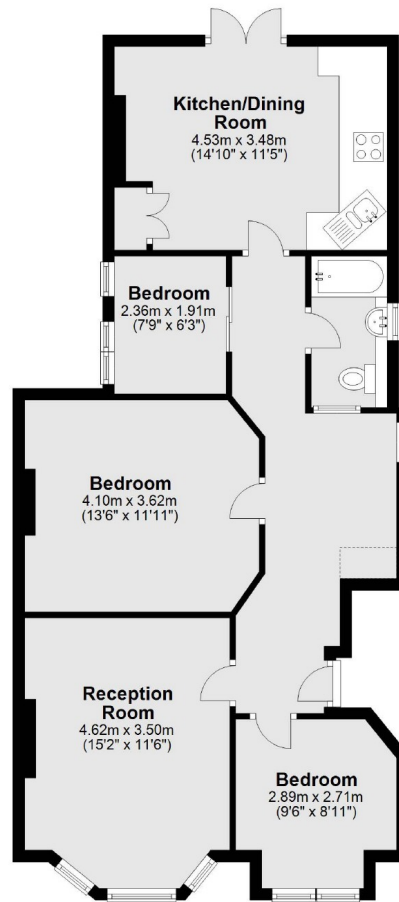
A spacious three bedroom flat in a Victorian conversion, with side access through to the beautifully presented private garden. The property benefits from having a south west facing reception room to the front, a large eat-in kitchen leading into the garden, off-street parking, and is available chain-free.

Holland Road is a quiet residential street located near to King Edward VII park, and close to the shops, cafes, and amenities on College Road and Chamberlayne Road. Transport Links include Kensal Green (Bakerloo) and Willesden Junction (Bakerloo & Overground).

### Features

- Three Bedrooms
- Private Garden
- Separate Eat-In Kitchen
- Off-Street Parking
- Chain-Free
- Close To Local Amenities

# Holland Road, London, NW10



Total area: approx. 76.5 sq. metres (823.7 sq. feet)